

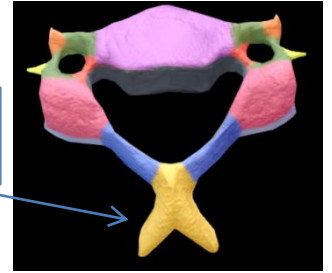
Cervical vertebrae

1. Typical:

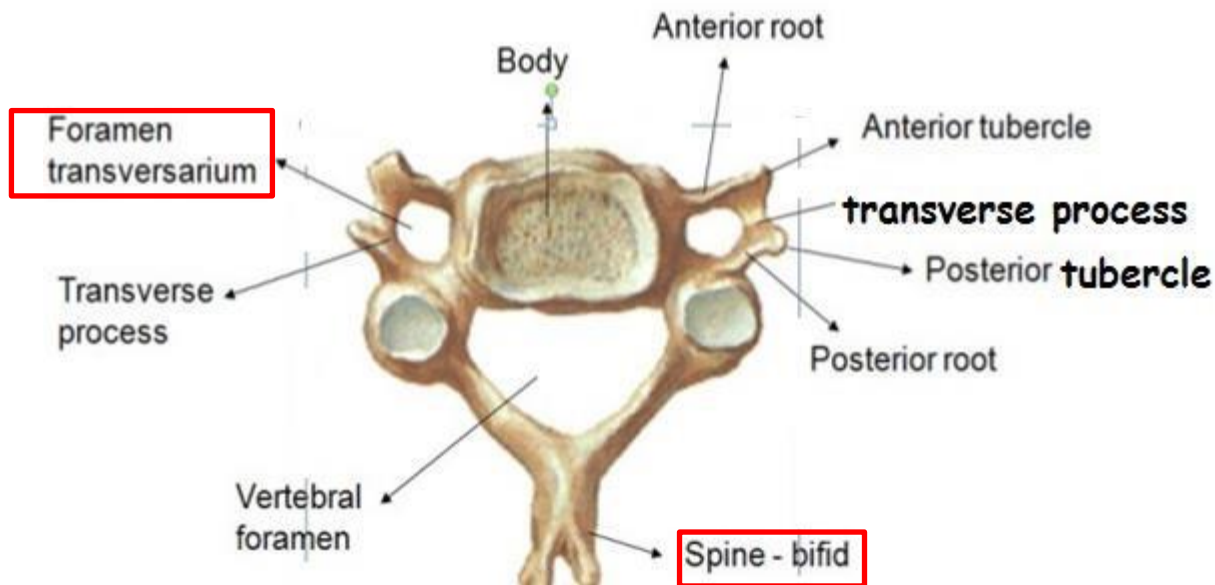
→ Bifid spine

refers to a condition where the spinous process, a bony projection off the back of a vertebra, is split or forked.

→ **Foramen transversum** in transverse process.



3, 4, 5, 6 cervical vertebrae
Typical cervical vertebra



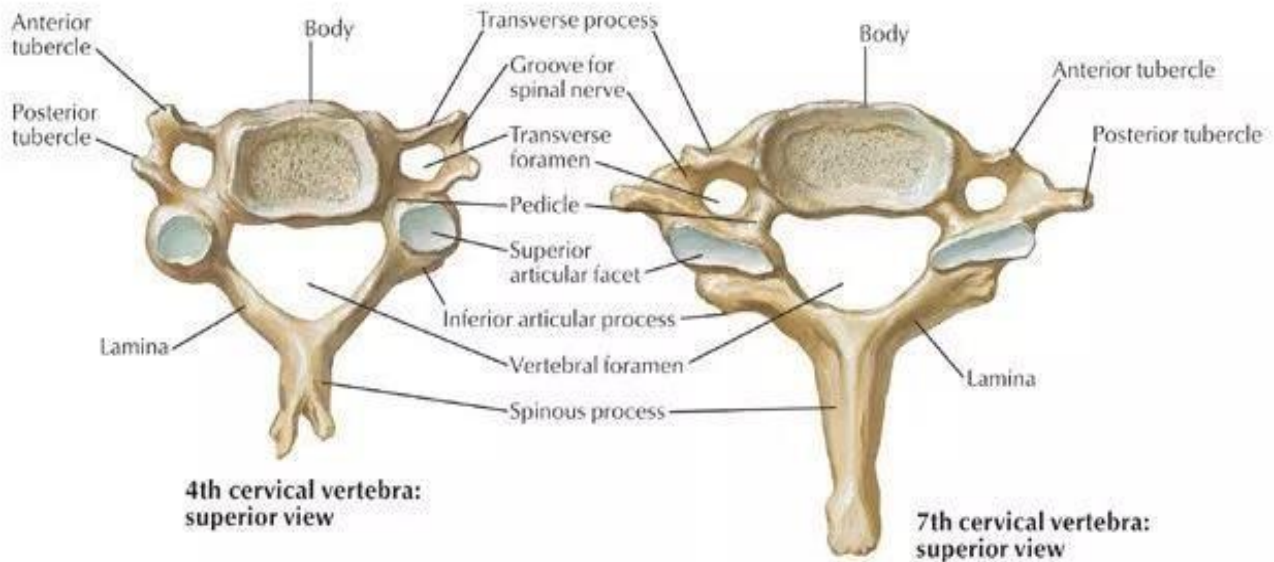
2. last: 7th cervical vertebra:

spine long blunt not bifid & foramen transversum narrow



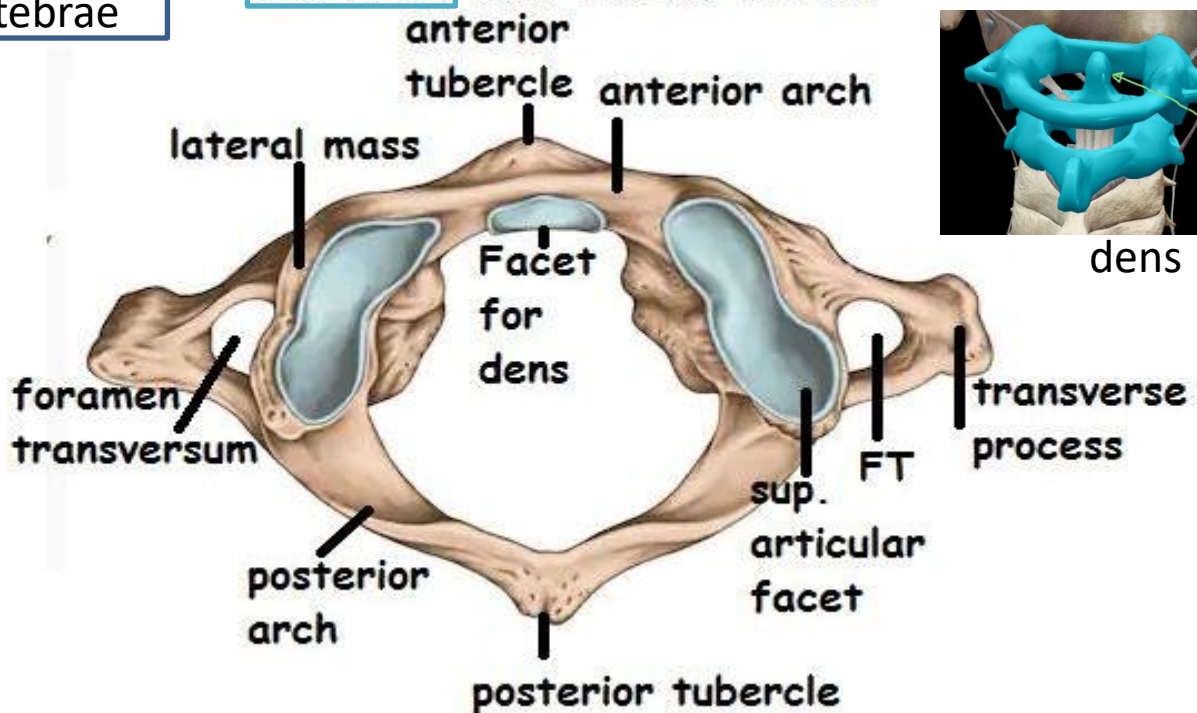
cervical vertebrae

General features of typical and last cervical vertebrae:

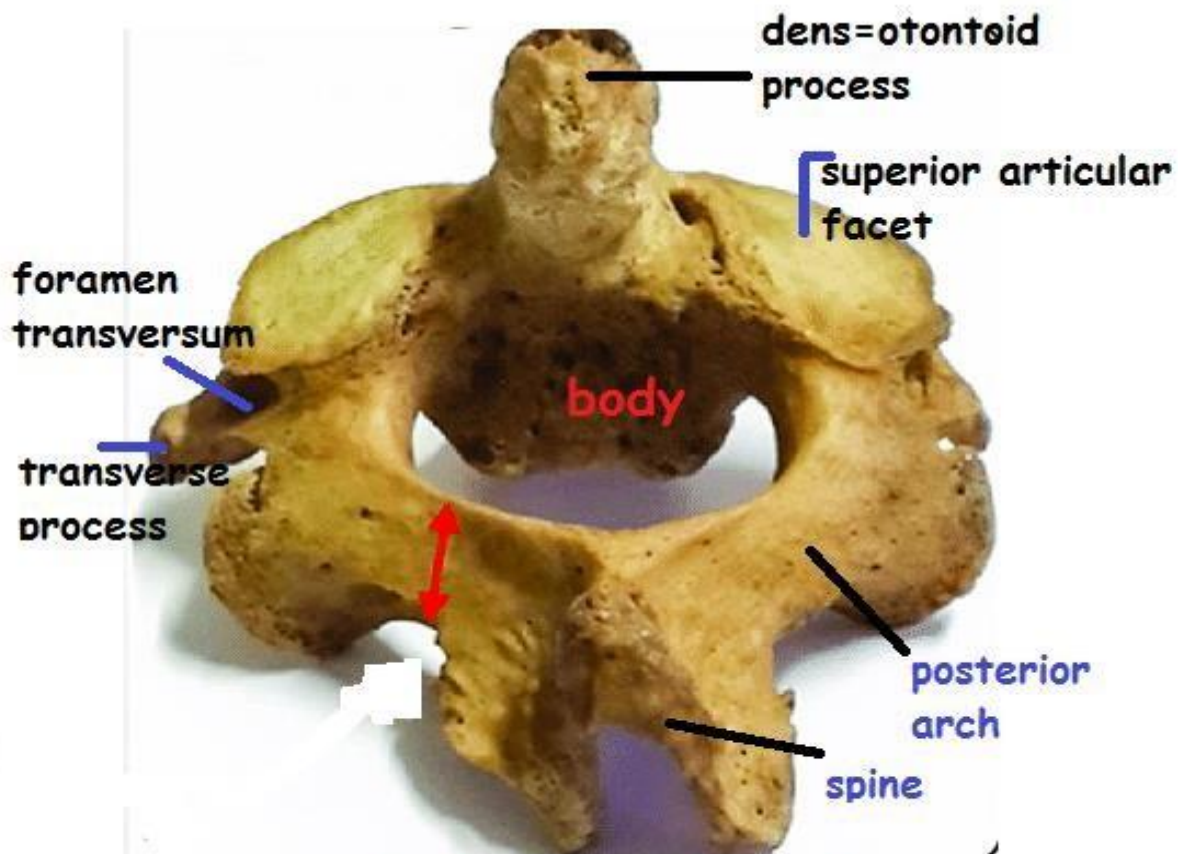
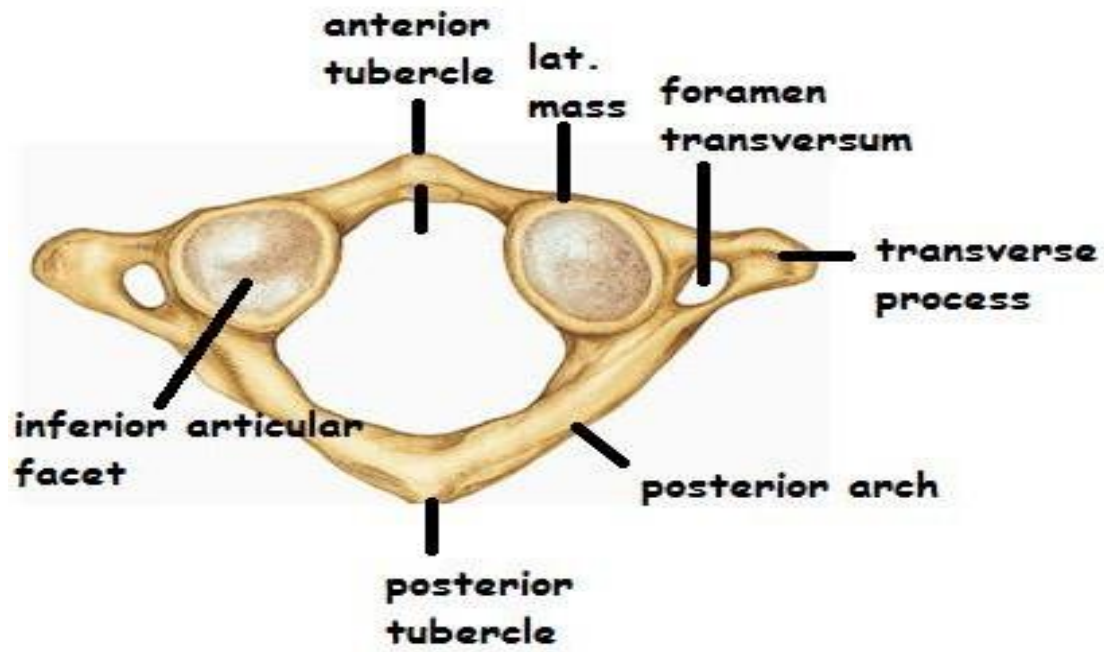


1st cervical
Vertebrae

ATLAS SUPERIO VIEW



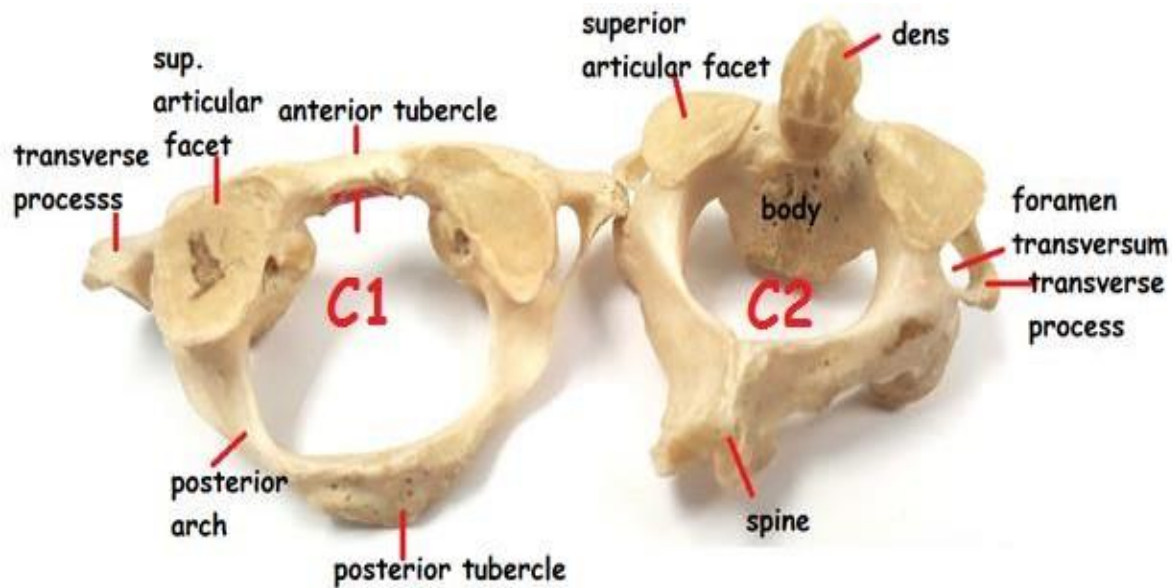
Atlas Inferior view



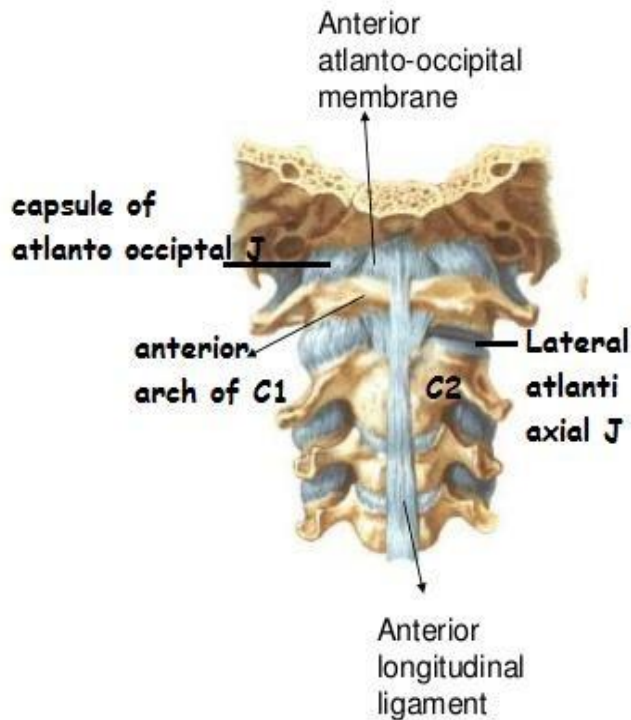
Axis superior view

Atlas

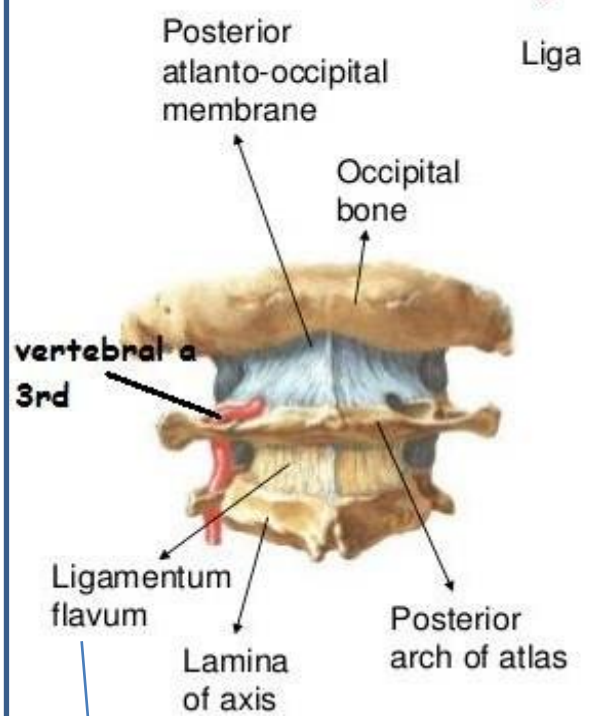
Axis



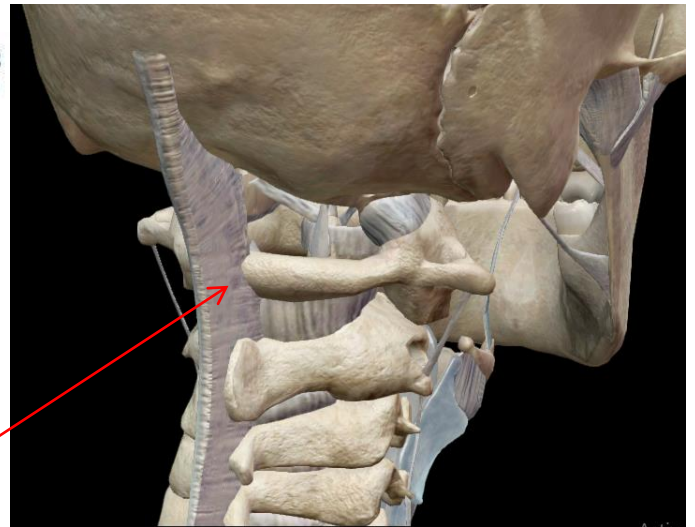
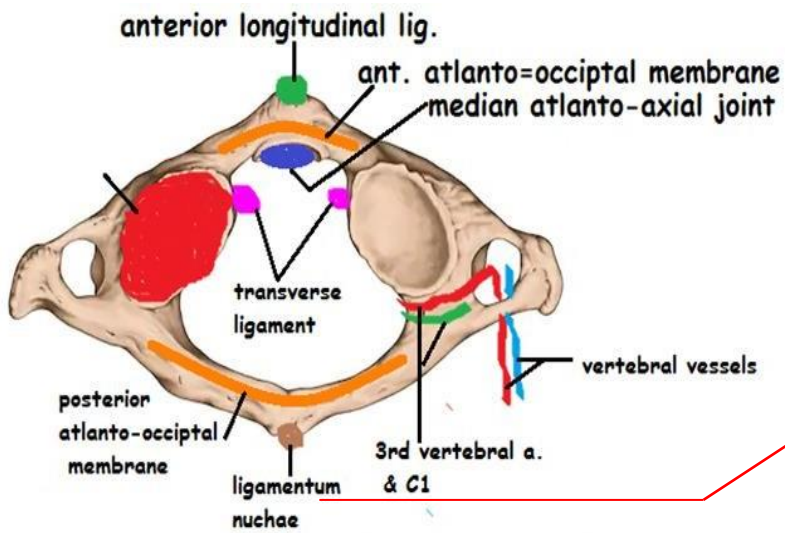
Anterior atlanto-occipital J



Posterior atlanto-occipital J

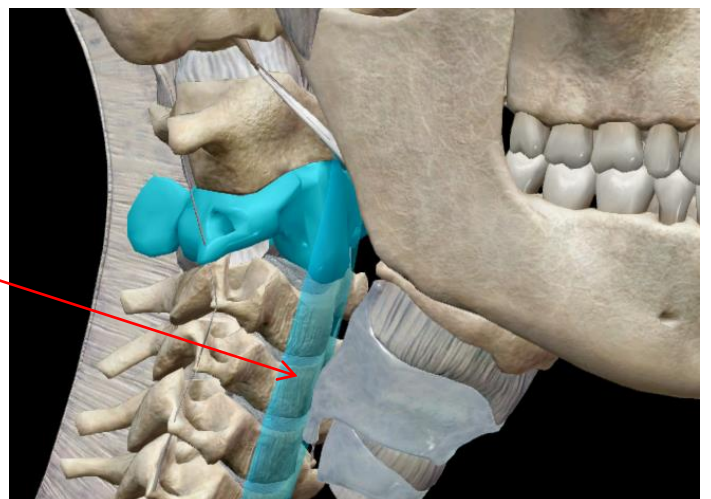
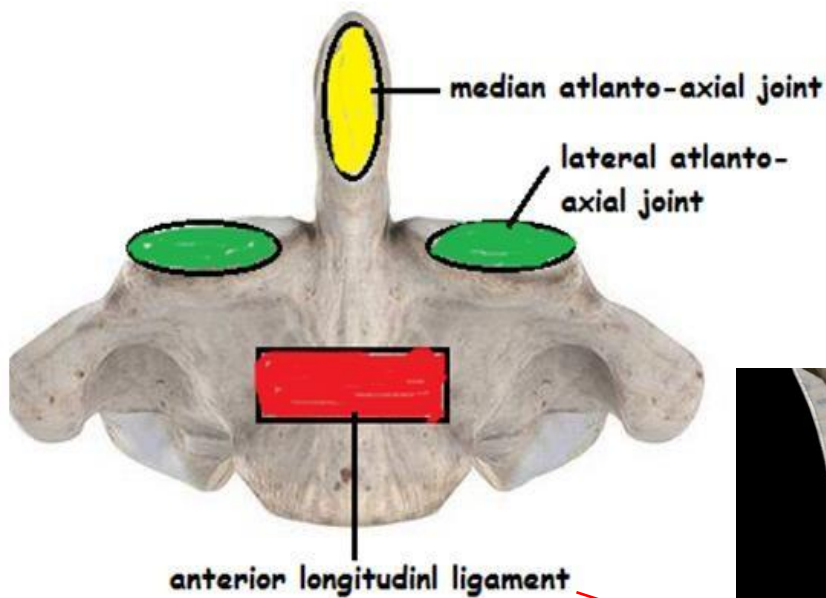


The ligamenta flava of the spine regions are bands of yellow, elastic tissue that connect the laminae of adjacent vertebrae from the axis to the first segment of the sacrum.

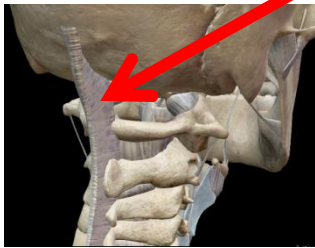
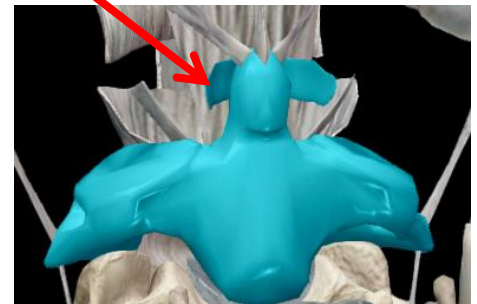
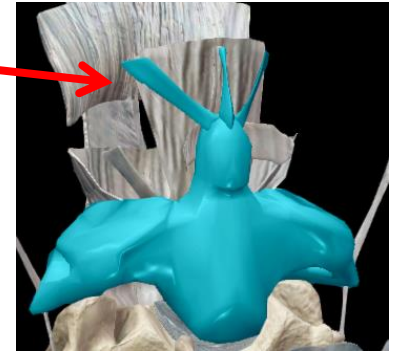
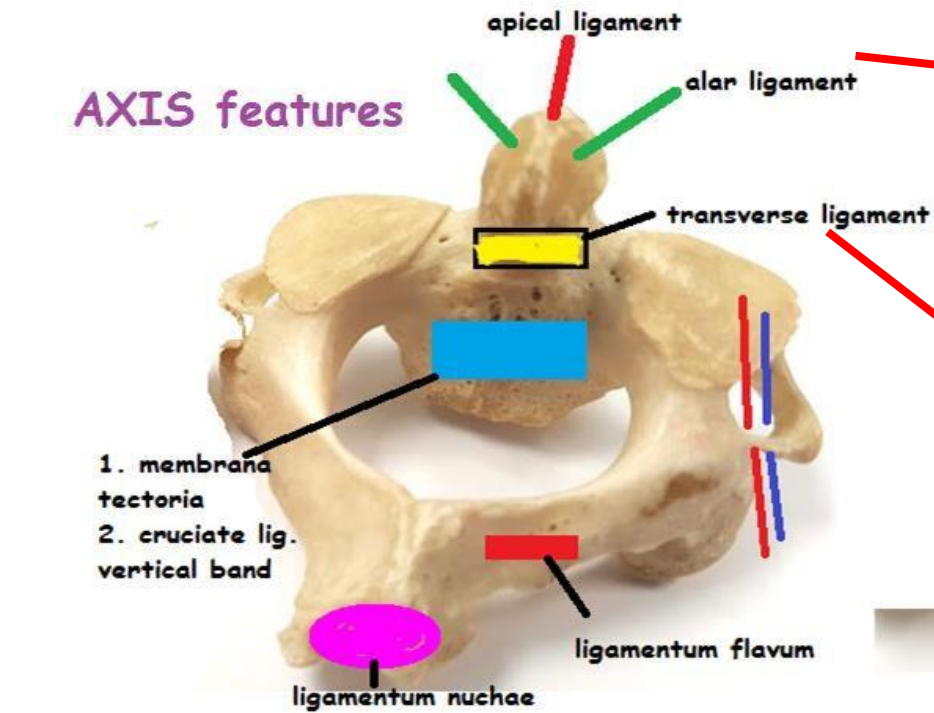


Particular feature of C1

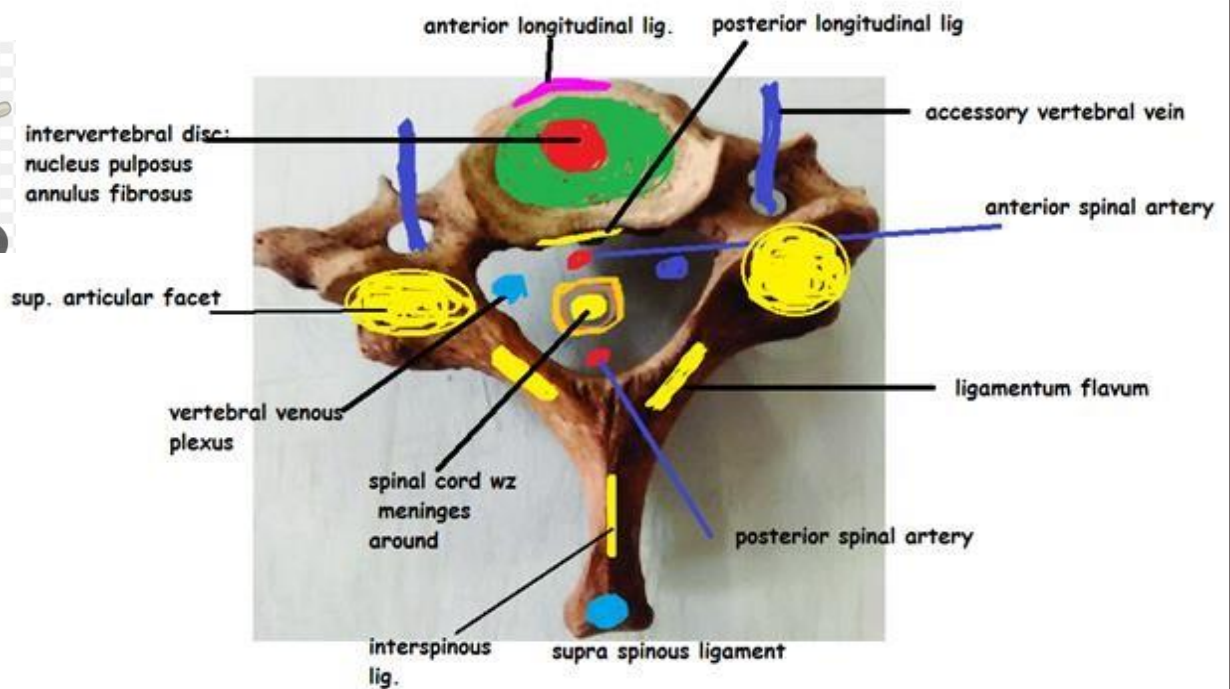
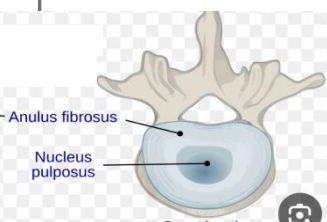
features of C2



AXIS features



C7 features



typical Cx vertebra features

