

# NERVES OF HEAD & NECK



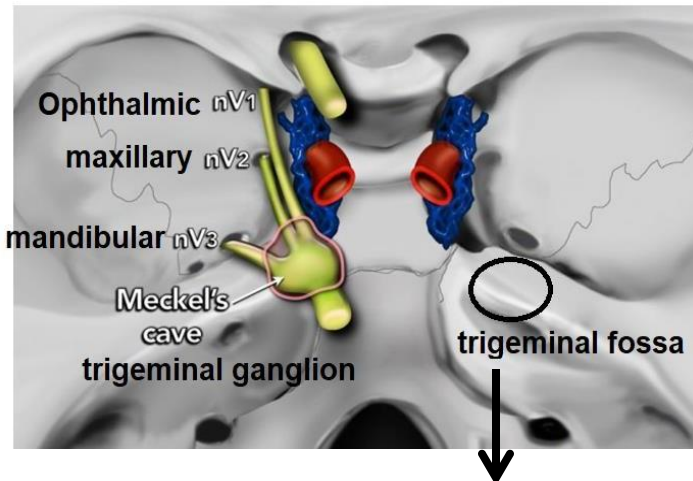
*By*

*Wessam Hamed*

*Assistant professor of anatomy & embryology*

*Faculty of medicine & Mansoura university*

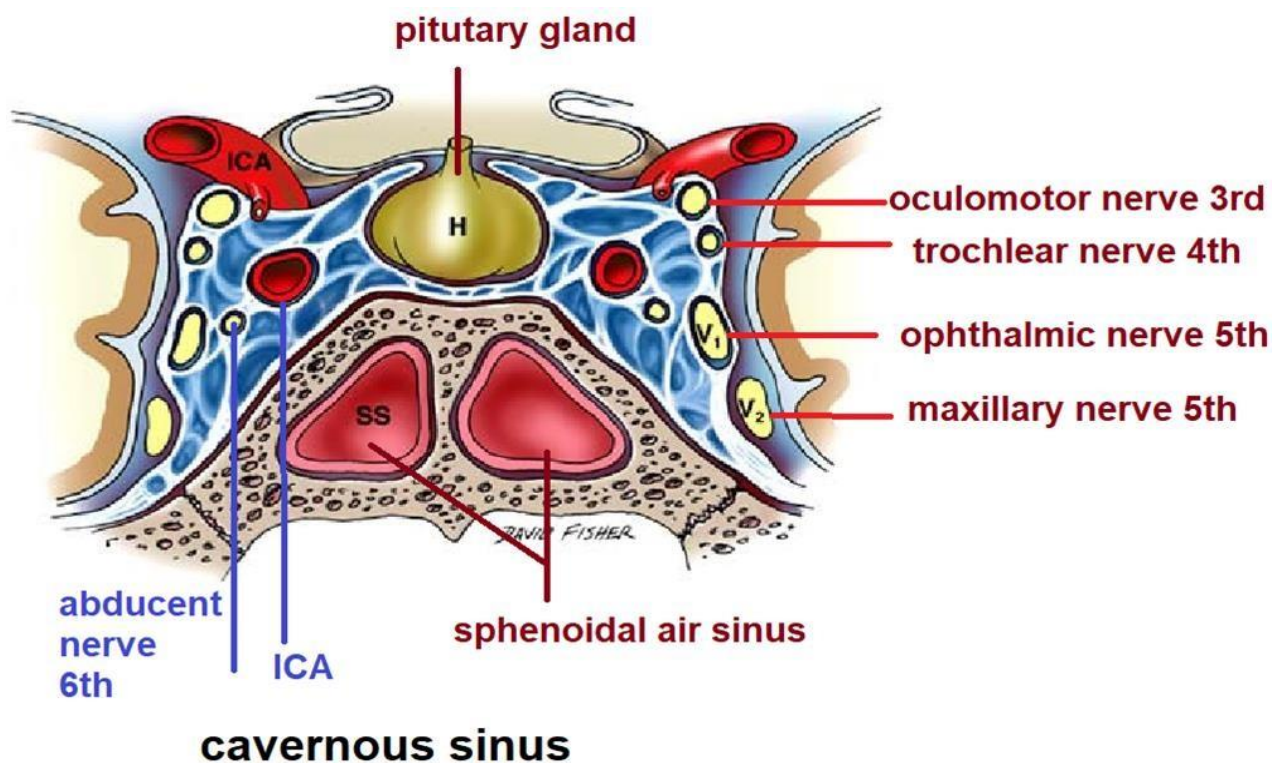
## Trigeminal ganglion site & branches



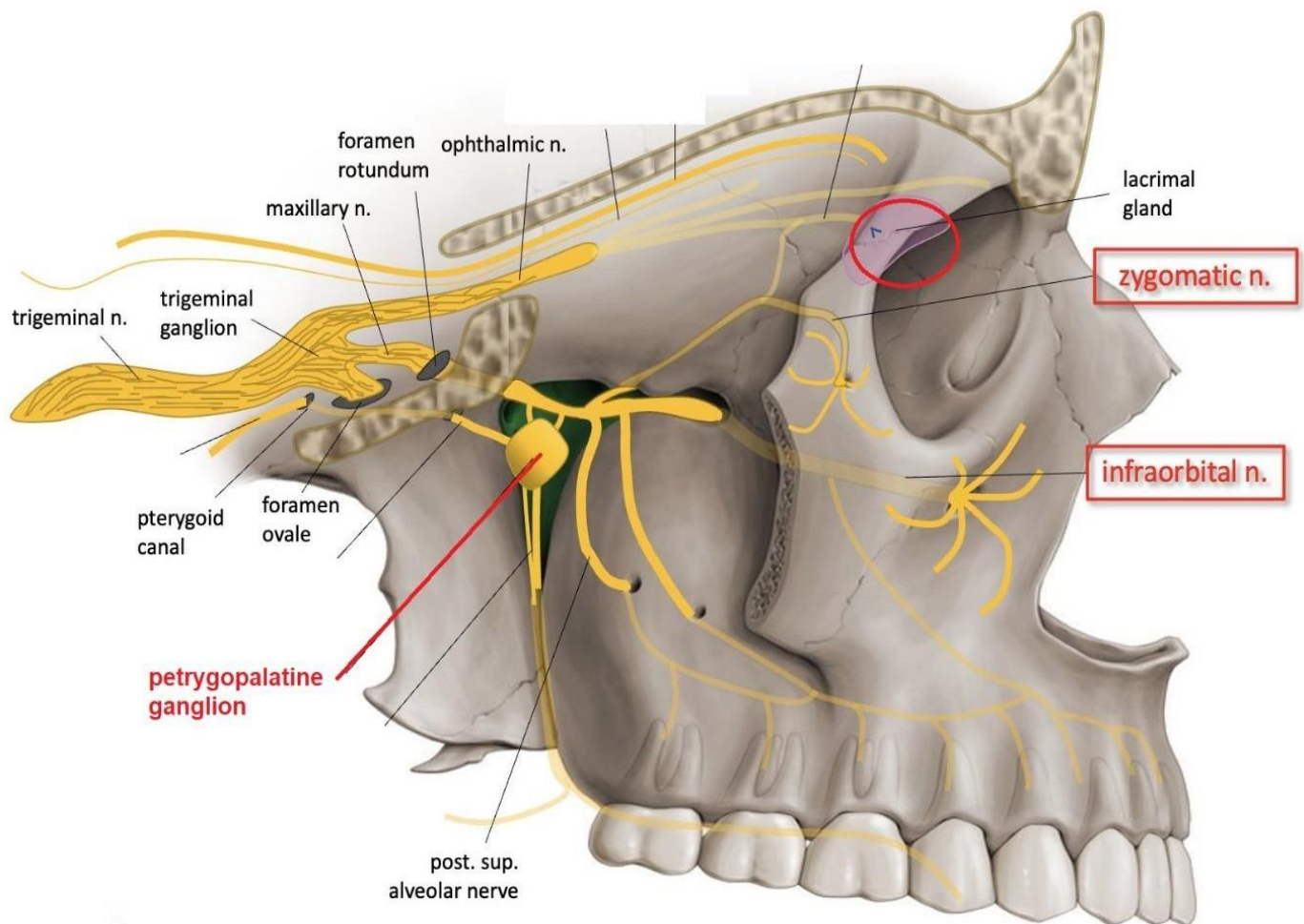
Meckel's Cave is a term used in anatomy to refer to a space or opening in the skull. Specifically, it is a part of the temporal bone located in the skull base.

Meckel's Cave contains the trigeminal ganglion, which is a sensory ganglion of the trigeminal nerve.

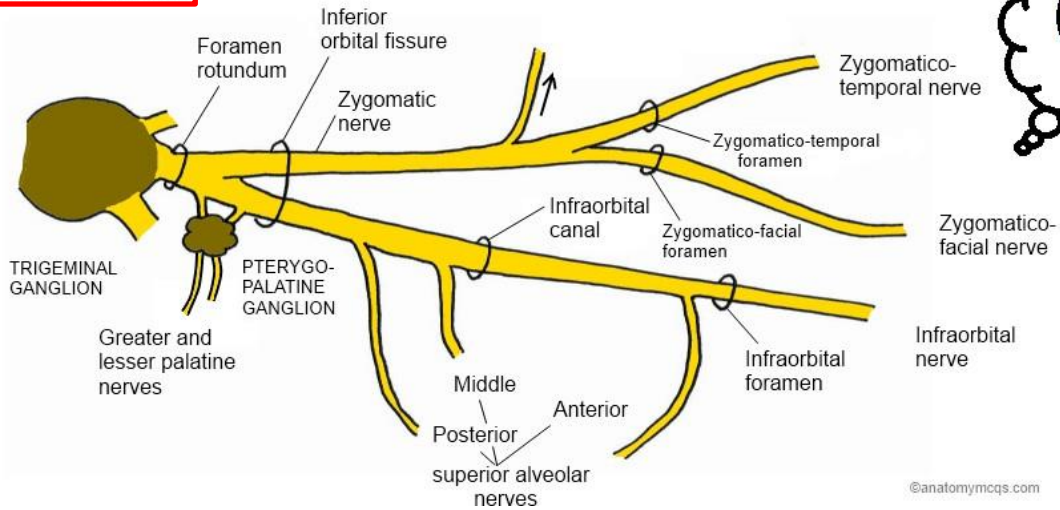
The trigeminal fossa houses the trigeminal ganglion



## Maxillary nerve: course & branches



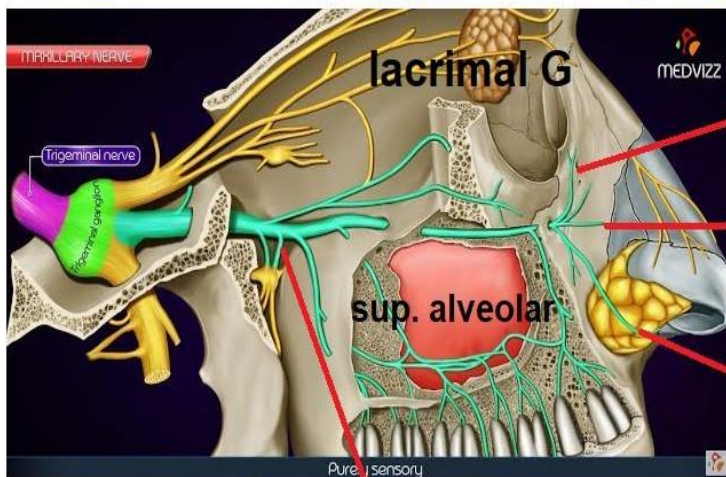
**MAXILLARY NERVE**



**lacrimal gland**



**maxillary nerve & pterygopalatine ganglion**



**palpebral**

**nasal**

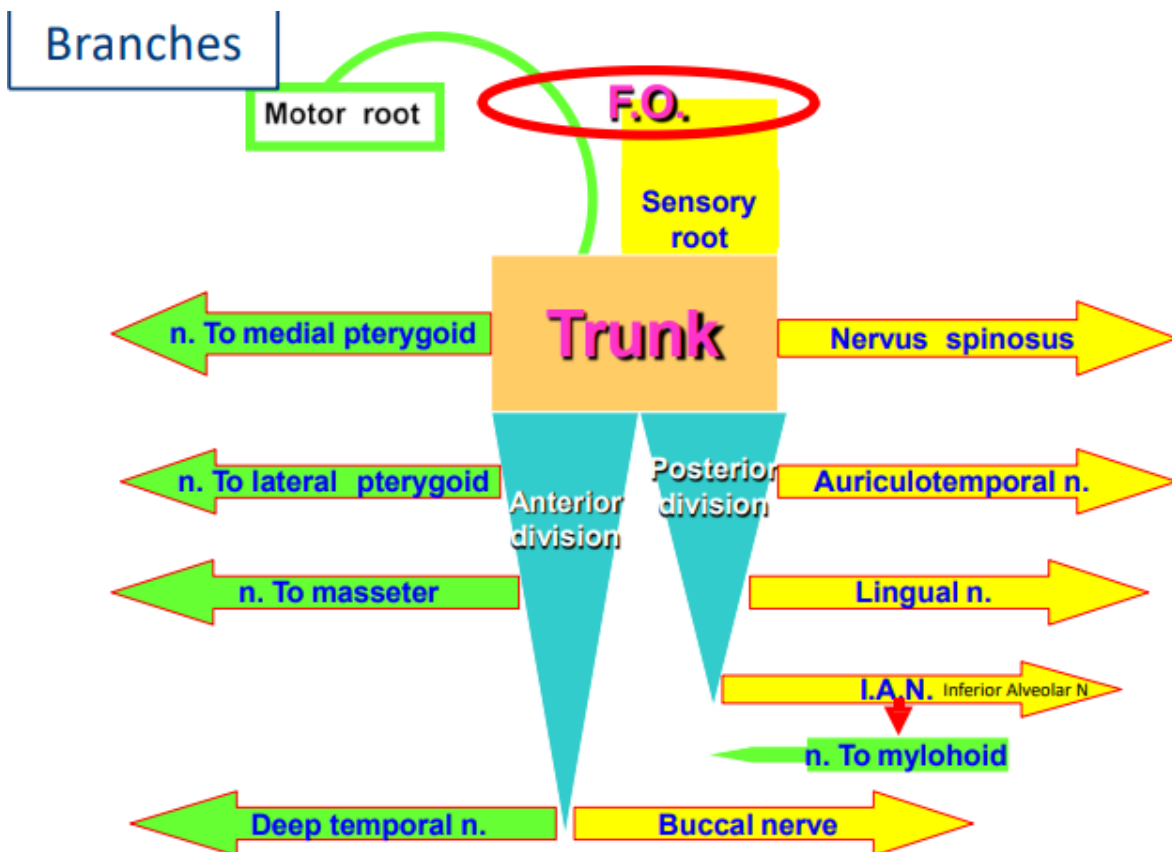
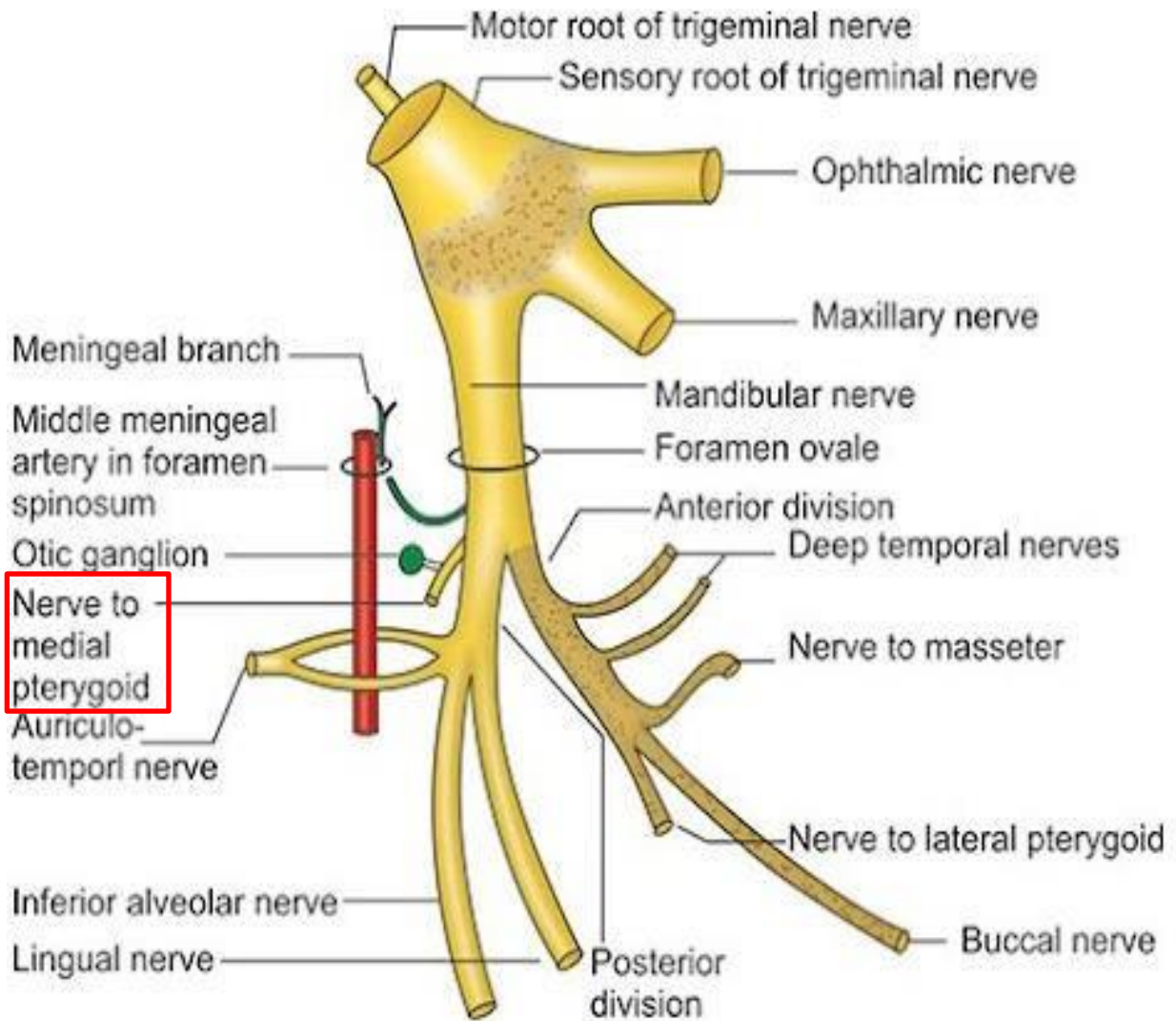
**labial**

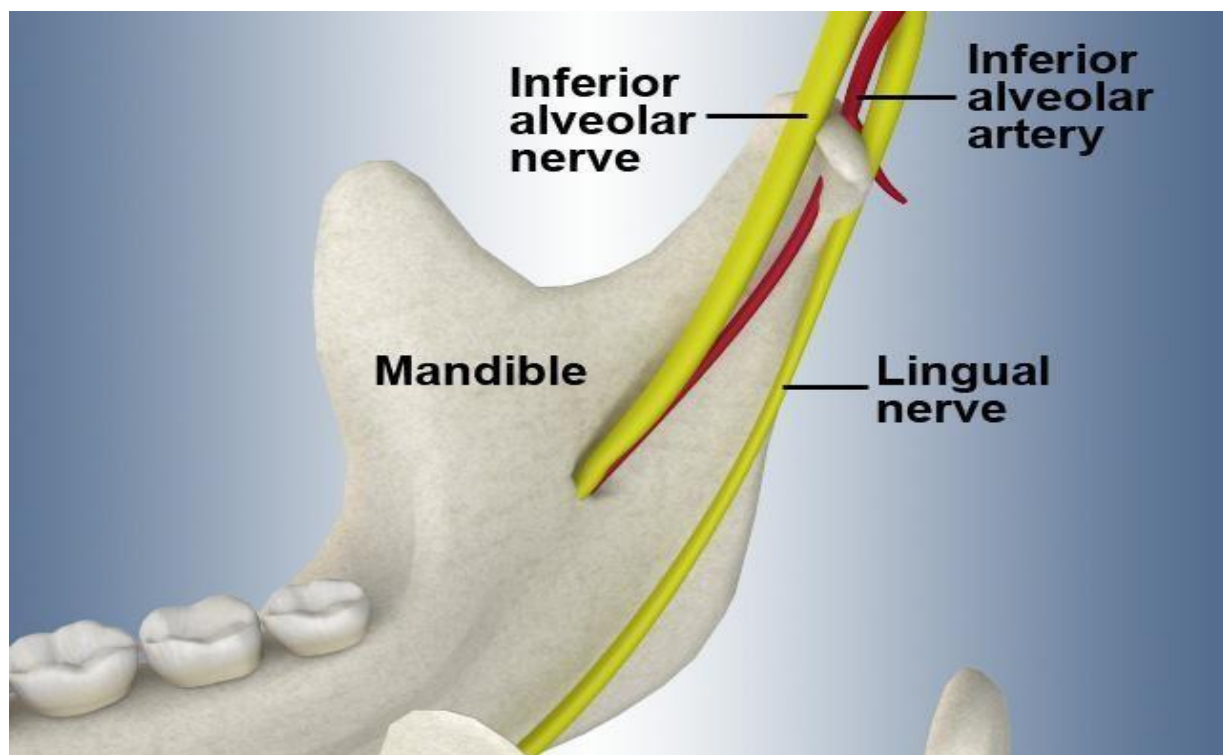
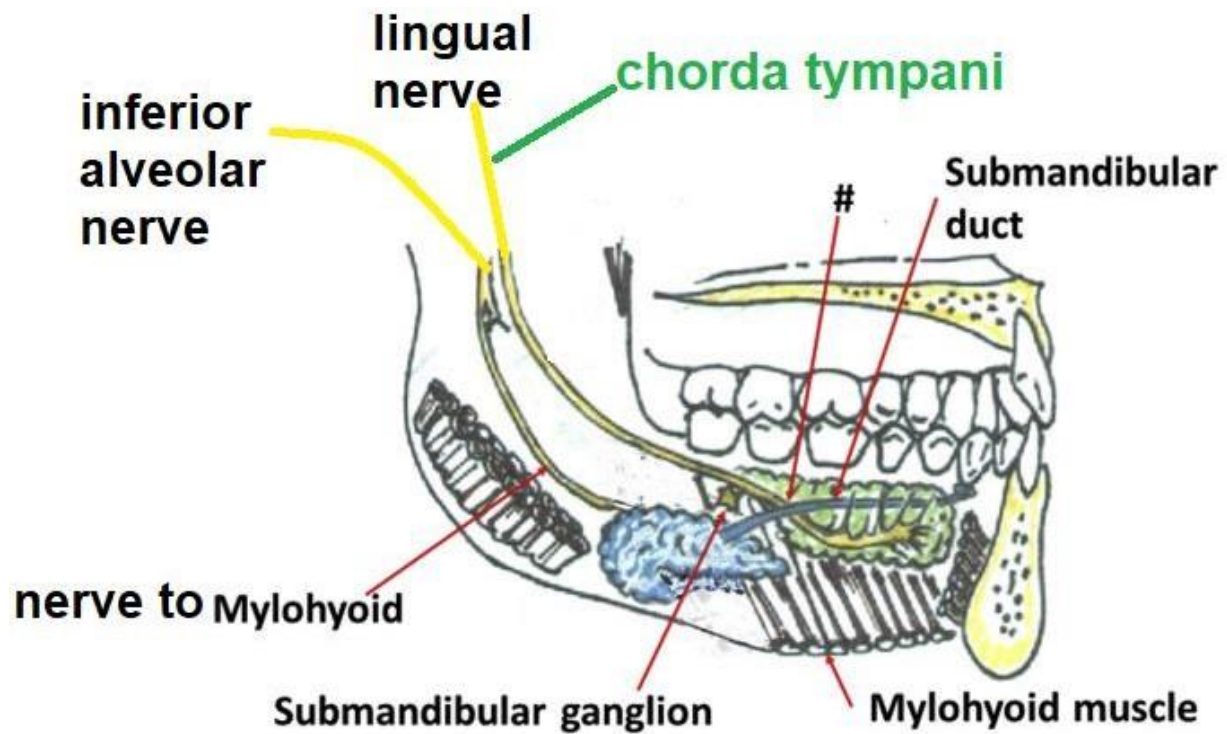
**infra  
orbital  
nerve**

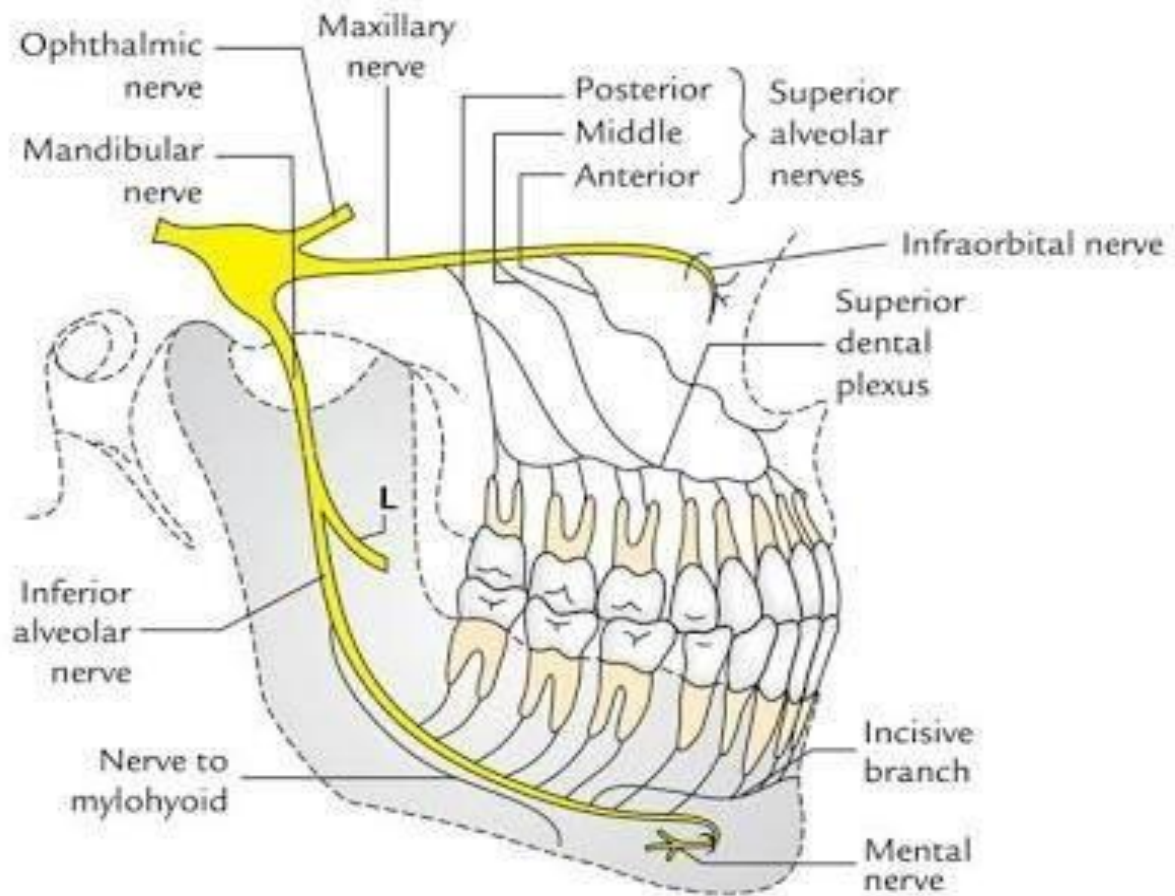
**2 sensory roots**



# Mandibular nerve trunk & 2 divisions







**Be Gods agent of mercy in the world**

