

Poserior triangle

presented by Reda Taha

rtaha@zu.edu.jo

Anatomy of the Side of the neck

Boundaries:

Above:

- Lower border of mandible.
- Mastoid process.
- Superior nuchal line.

Below:

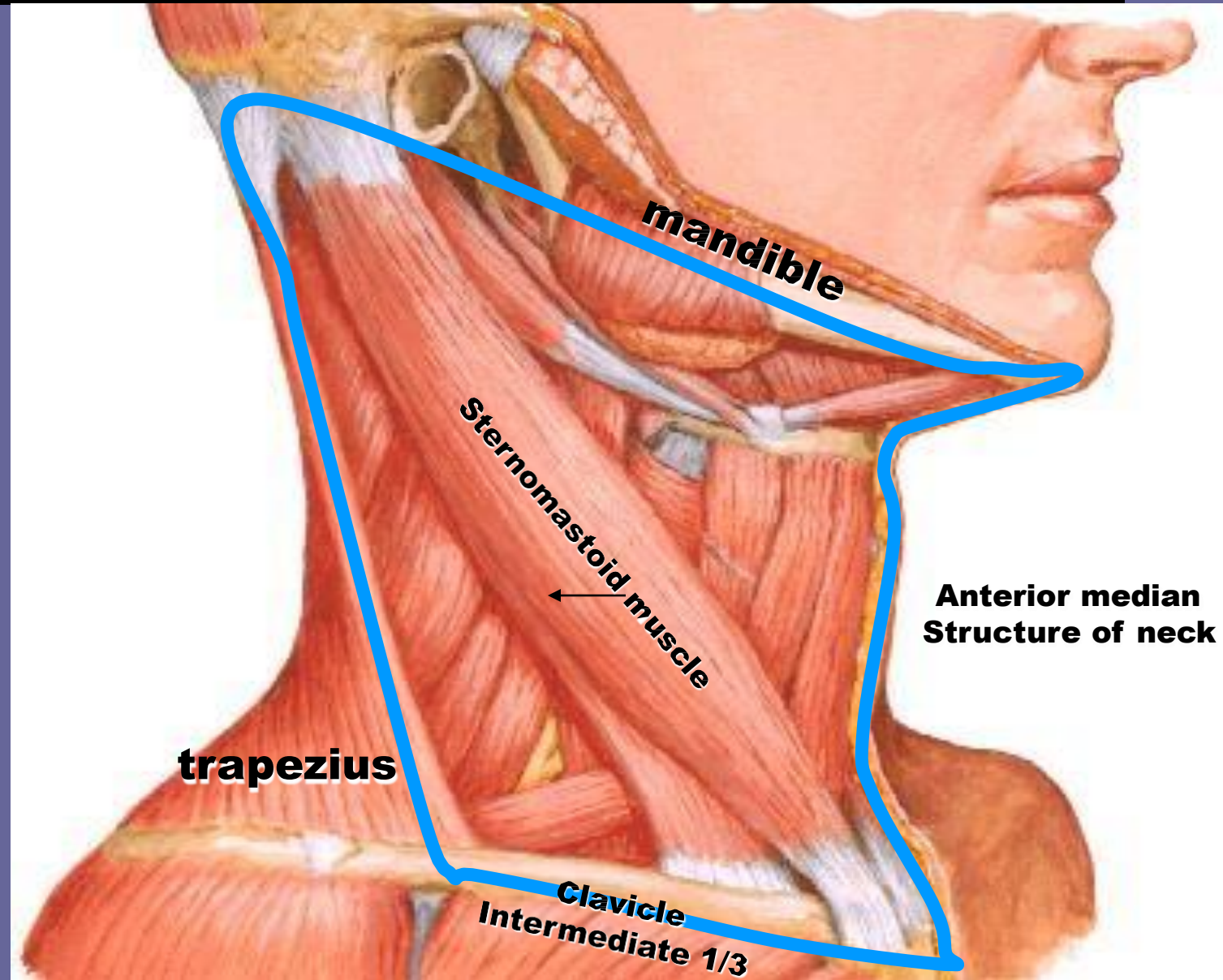
- The clavicle (middle 1/3).
- Upper border of the sternum.

Anteriorly:

- The median plane.

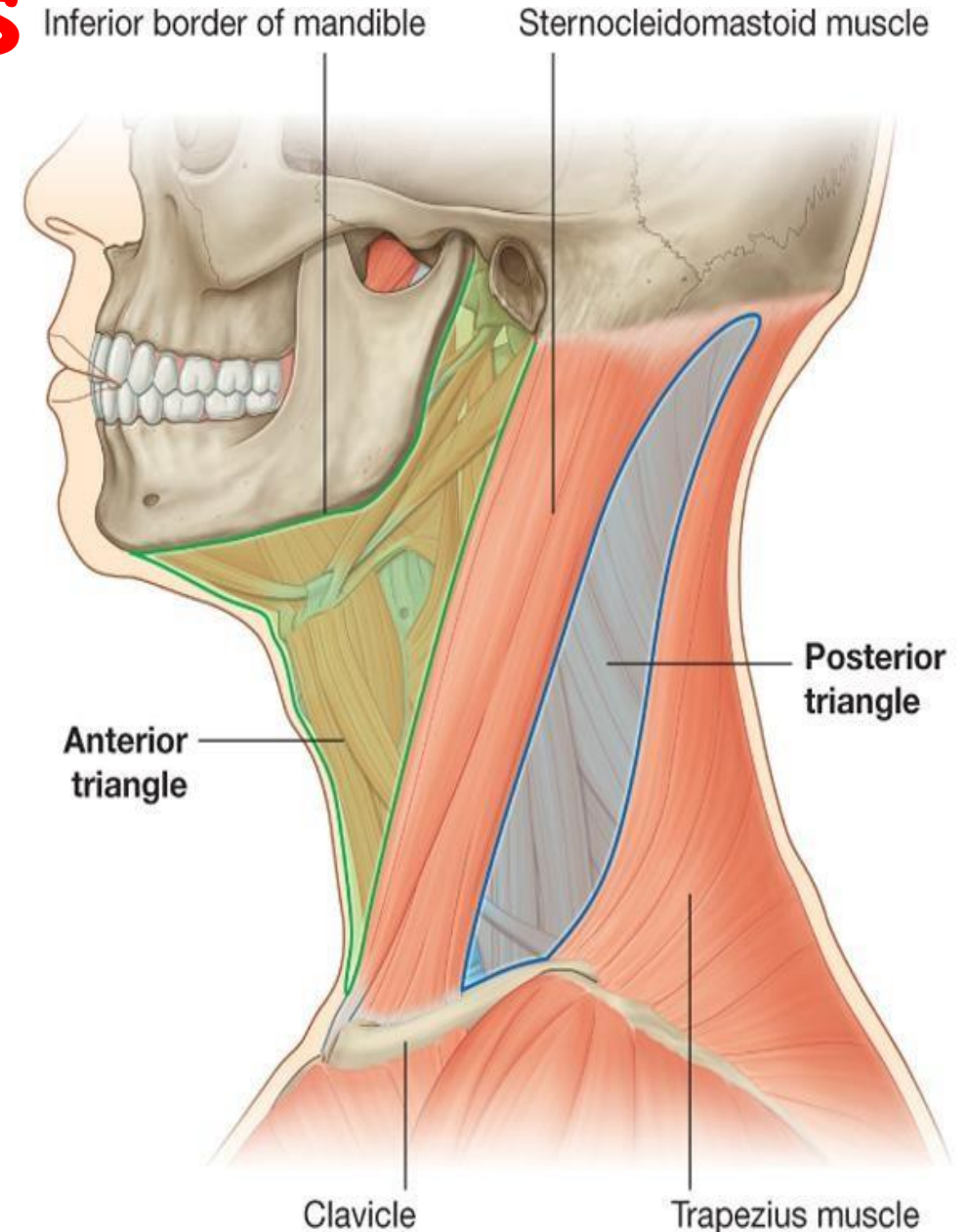
Posteriorly:

- Anterior border of trapezius.



Divisions

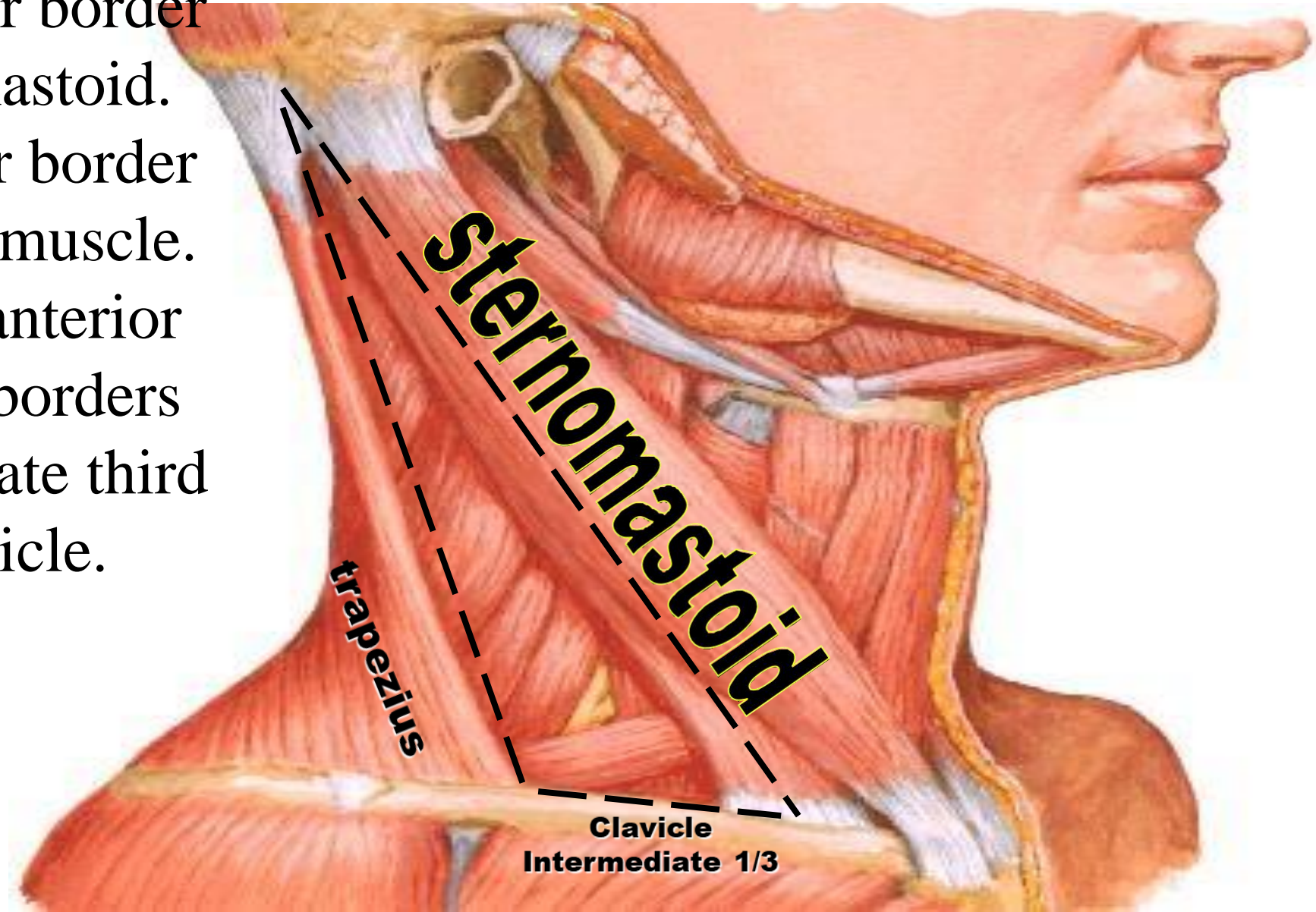
- The side of the neck is divided by the sternocleidomastoid muscle into two triangles:
- **Anterior triangle:**
the triangular space in front of sternocleidomastoid muscle
- **Posterior triangle:**
the triangular space behind sternocleidomastoid muscle



Posterior triangle of the neck

Boundaries:

- **Anteriorly**: posterior border of the sternocleidomastoid.
- **Posteriorly**: anterior border of the trapezius muscle.
- **Apex**: meeting of anterior and posterior borders
- **Base**: the intermediate third of the clavicle.

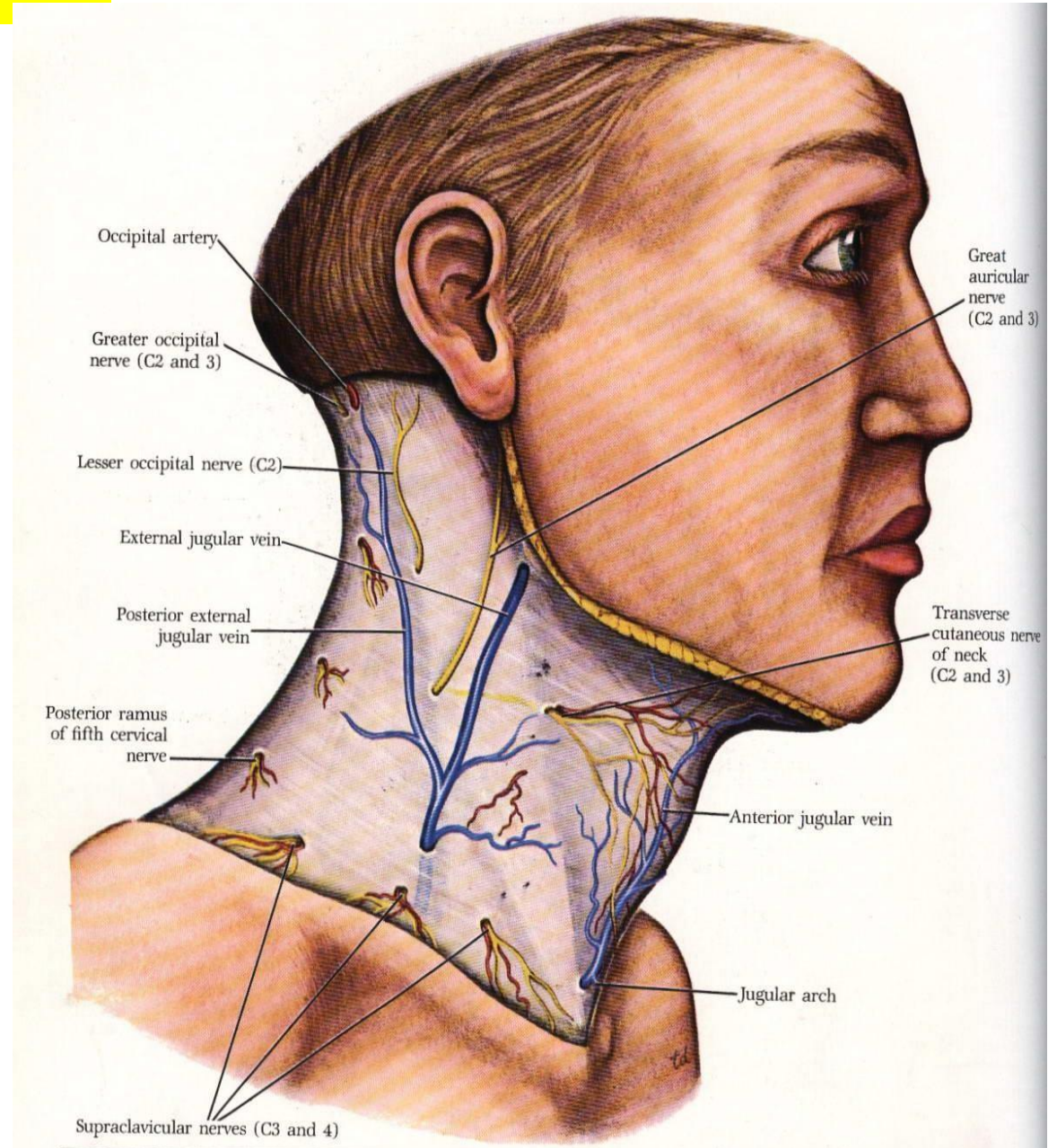


ROOF

1]=Skin.

2]=Superficial fascia
with platysma and
cutaneous nerve .

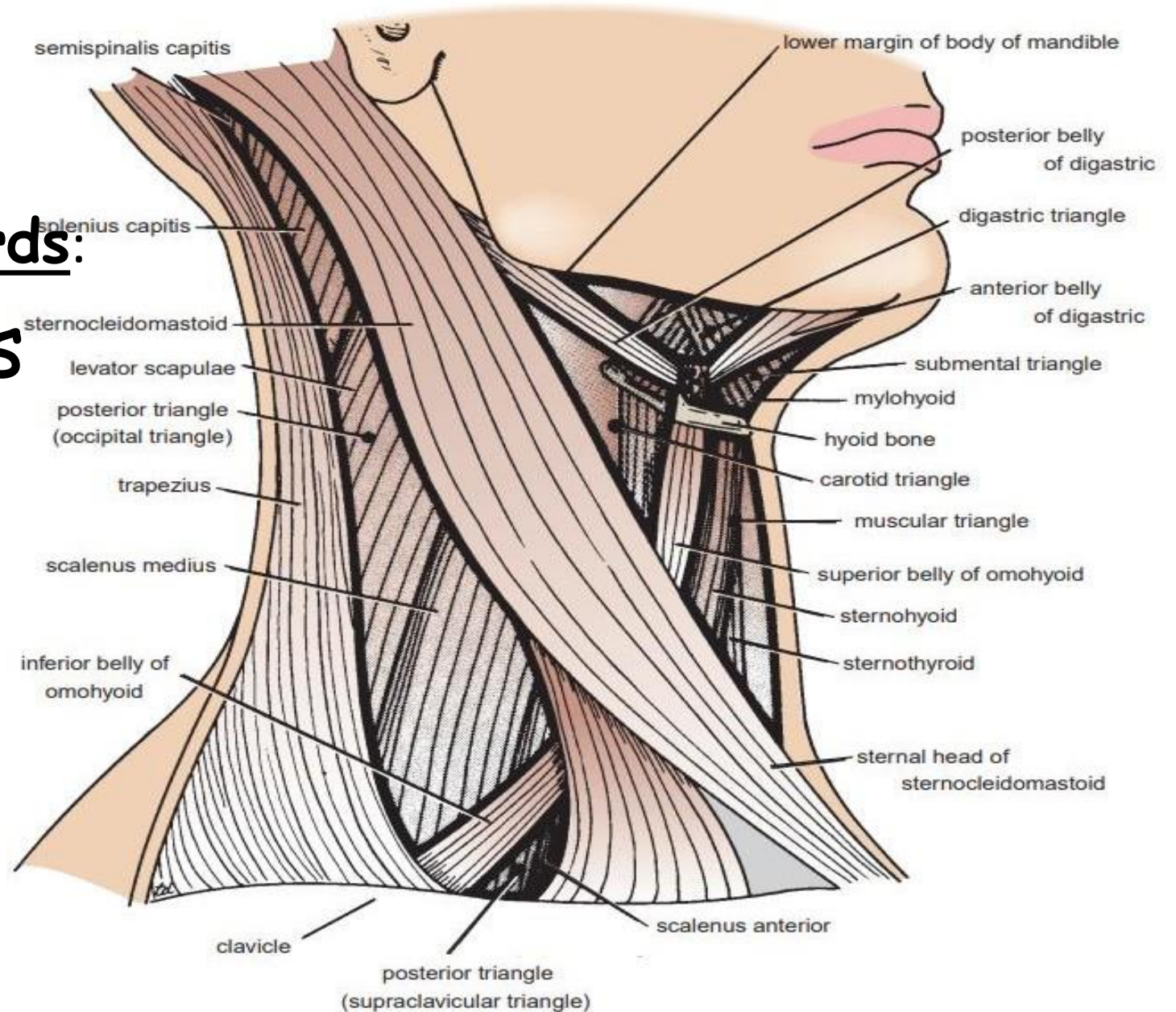
3]=Deep fascia.



Floor

➤ formed by the following muscles from above downwards:

1. semispinalis capitis
2. splenius capitis.
3. levator scapulae
4. scalenus medius

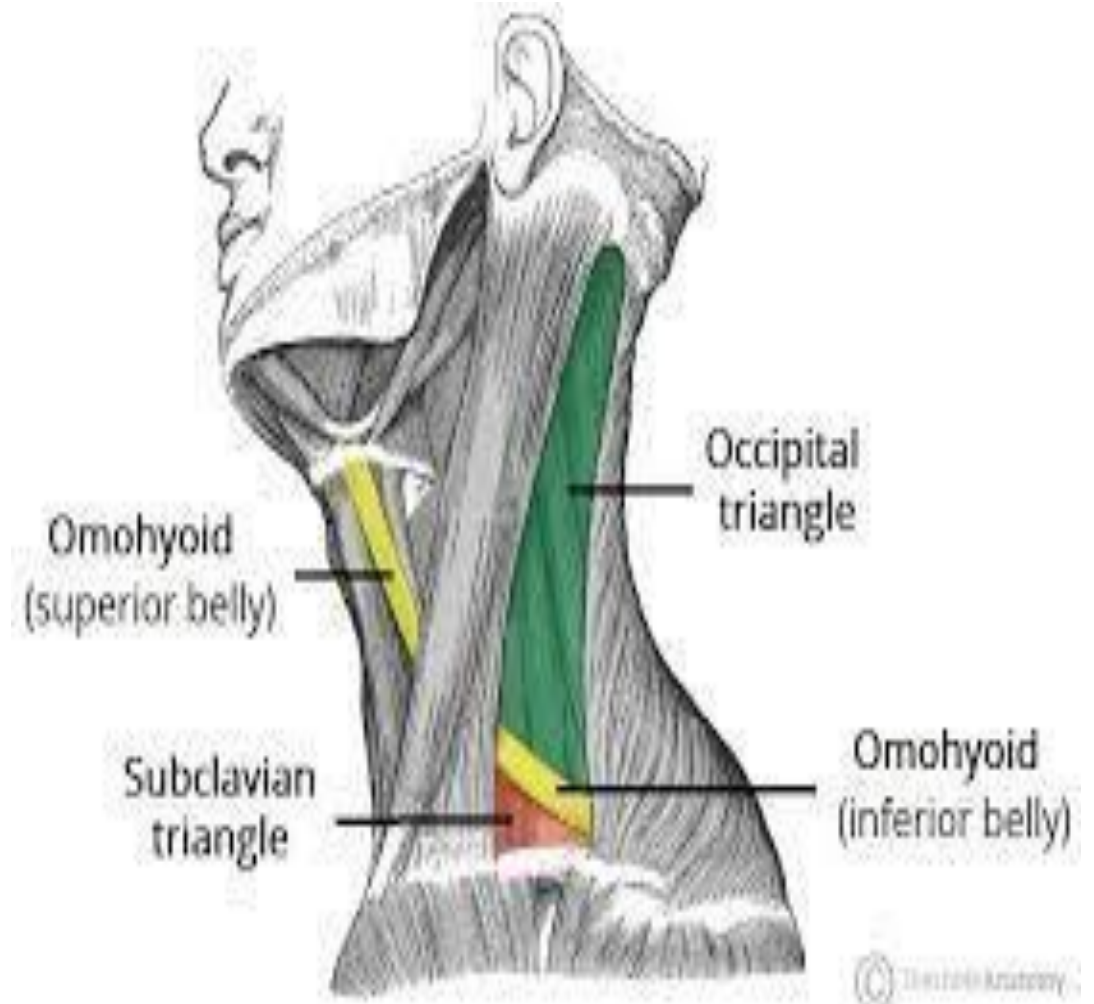


Division

*Divided by inferior belly
of omohyoid;*

1 Occipital triangle :
larger upper part.

2 Supra-clavicular triangle:
smaller lower part



CONTENTS

1-VEINS

2-Arteries :-

3-Nerves

4-Muscle

5-Lymph nods:

1-VEINS:-

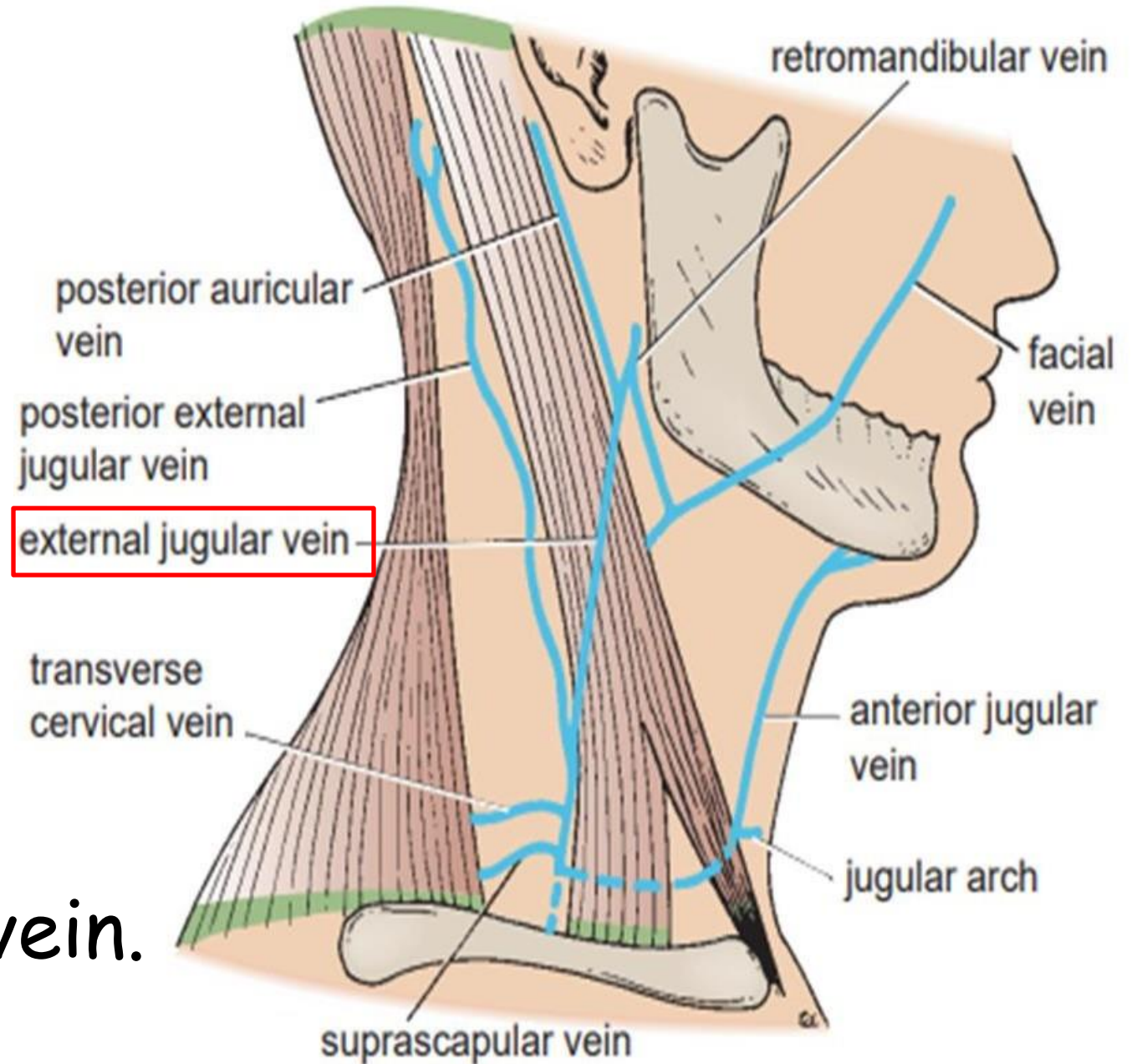
1 External jugular vein

From posterior division of retromandibular and posterior auricular

2 Subclavian vein.

3 Supra-scapular vein.

4 Transverse cervical vein.



2-Arteries :-

1 Subclavian artery.
[third part]

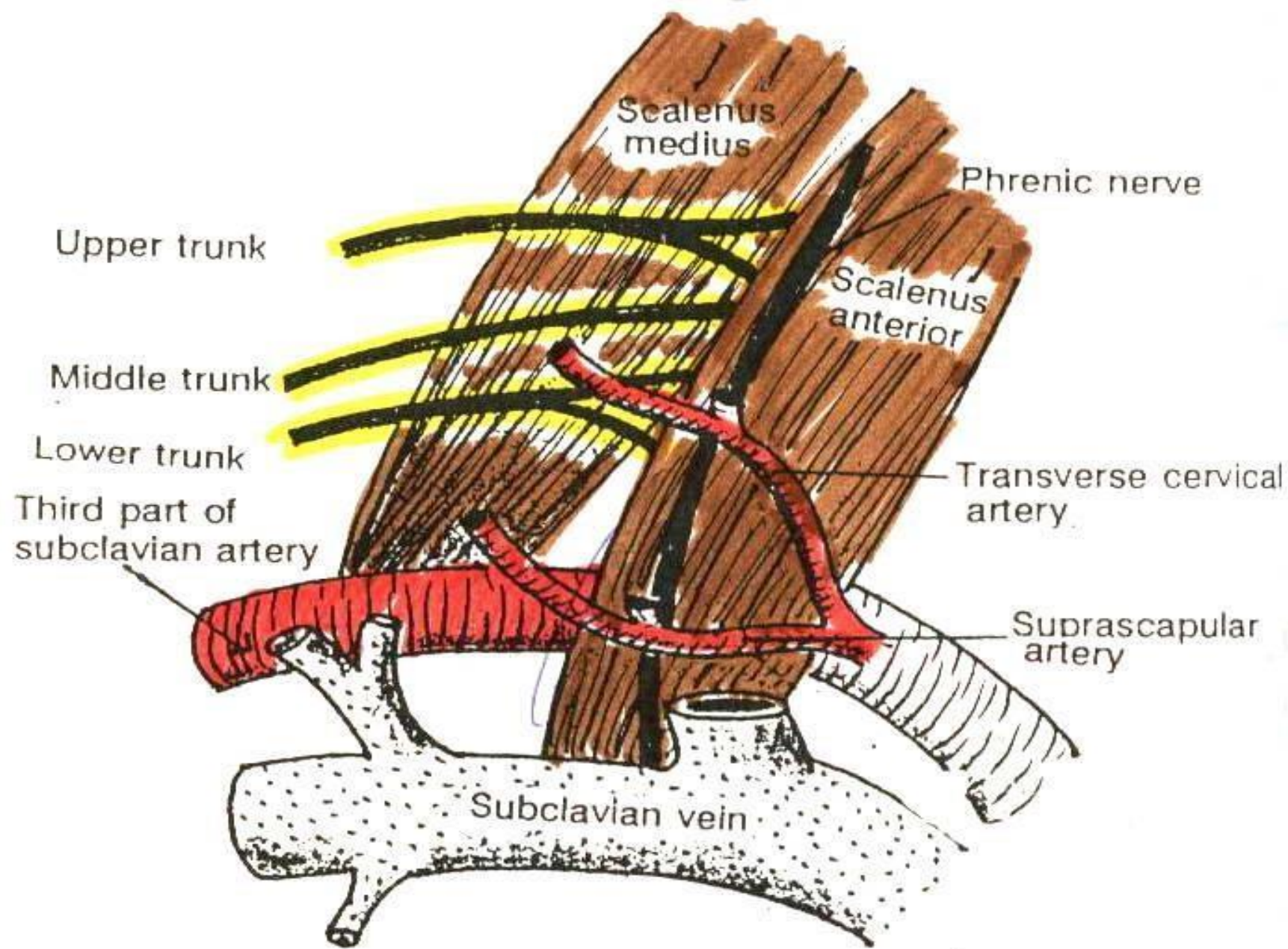
2 Supra-scapular artery.

1st part subclavian → thyrocervical trunk → supra-scapular Artery.

3 Transverse cervical artery.

4 Occipital artery.

From external carotid artery



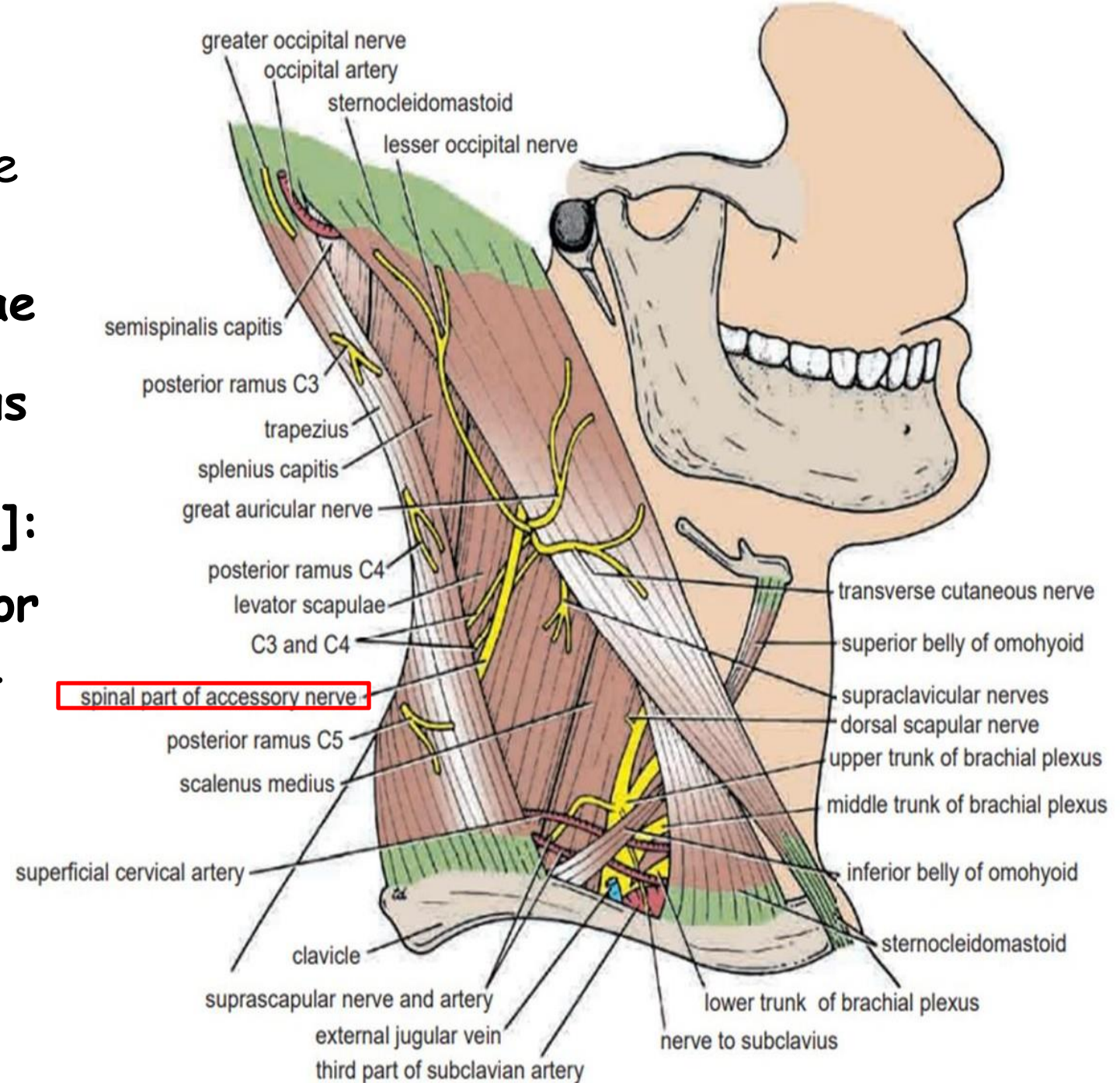
Main contents of the posterior triangle

3-Nerves:-

1-Accessory nerve **11th** (spinal root): appears at the middle of the posterior border of the sternomastoid. Then it runs downwards on the levator scapulae muscle and supply sternocleidomastoid and trapezius Ms

2-Brachial plexus [roots & trunks]:

- **Site:** between the scalenus anterior and the scalenus medius muscles.
- **roots stage** → the anterior primary rami of C5, C6, C7, C8, T1.
- **trunk stage** → upper(C5, 6) - middle(C7) - lower(C8, T1).

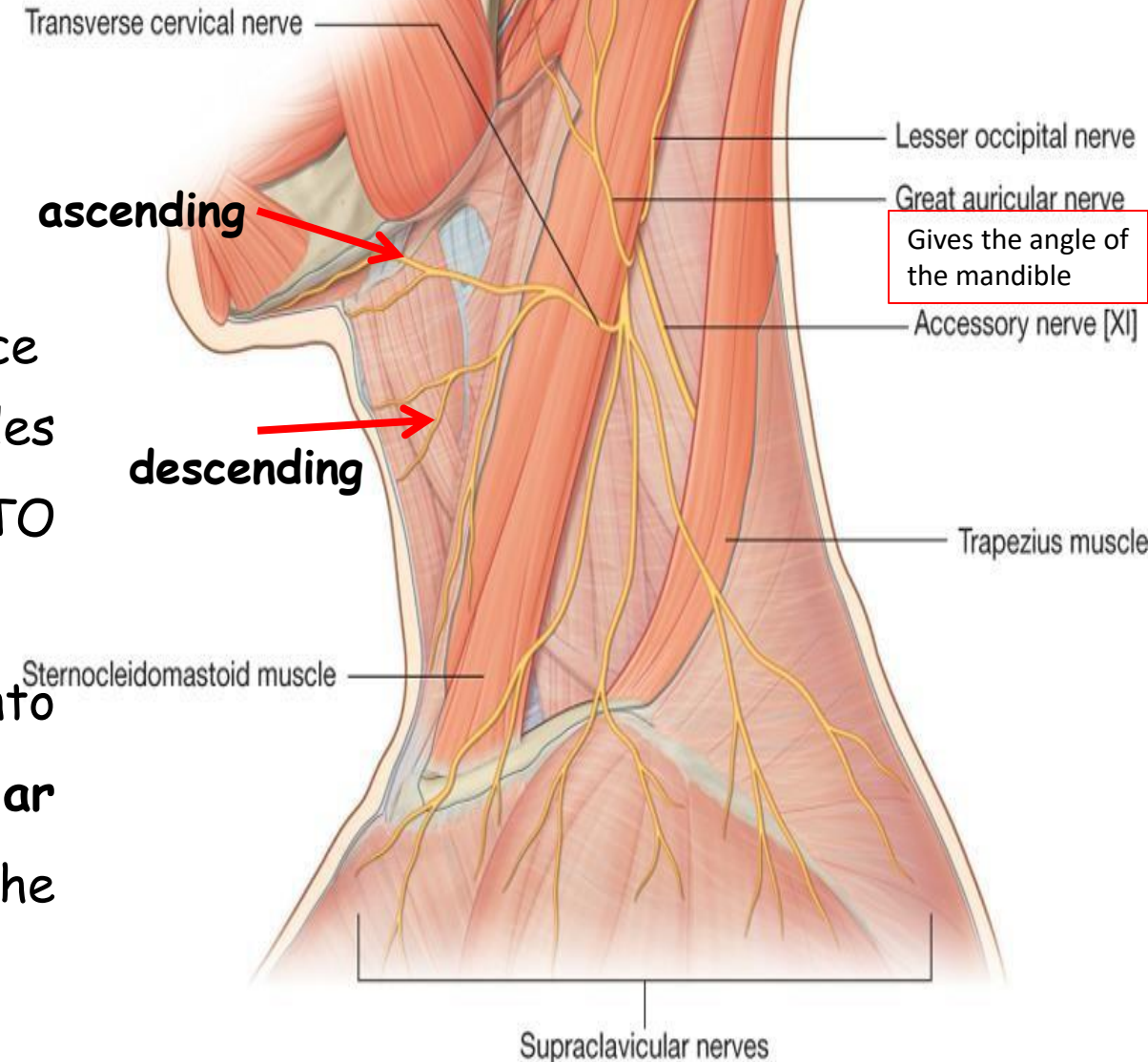


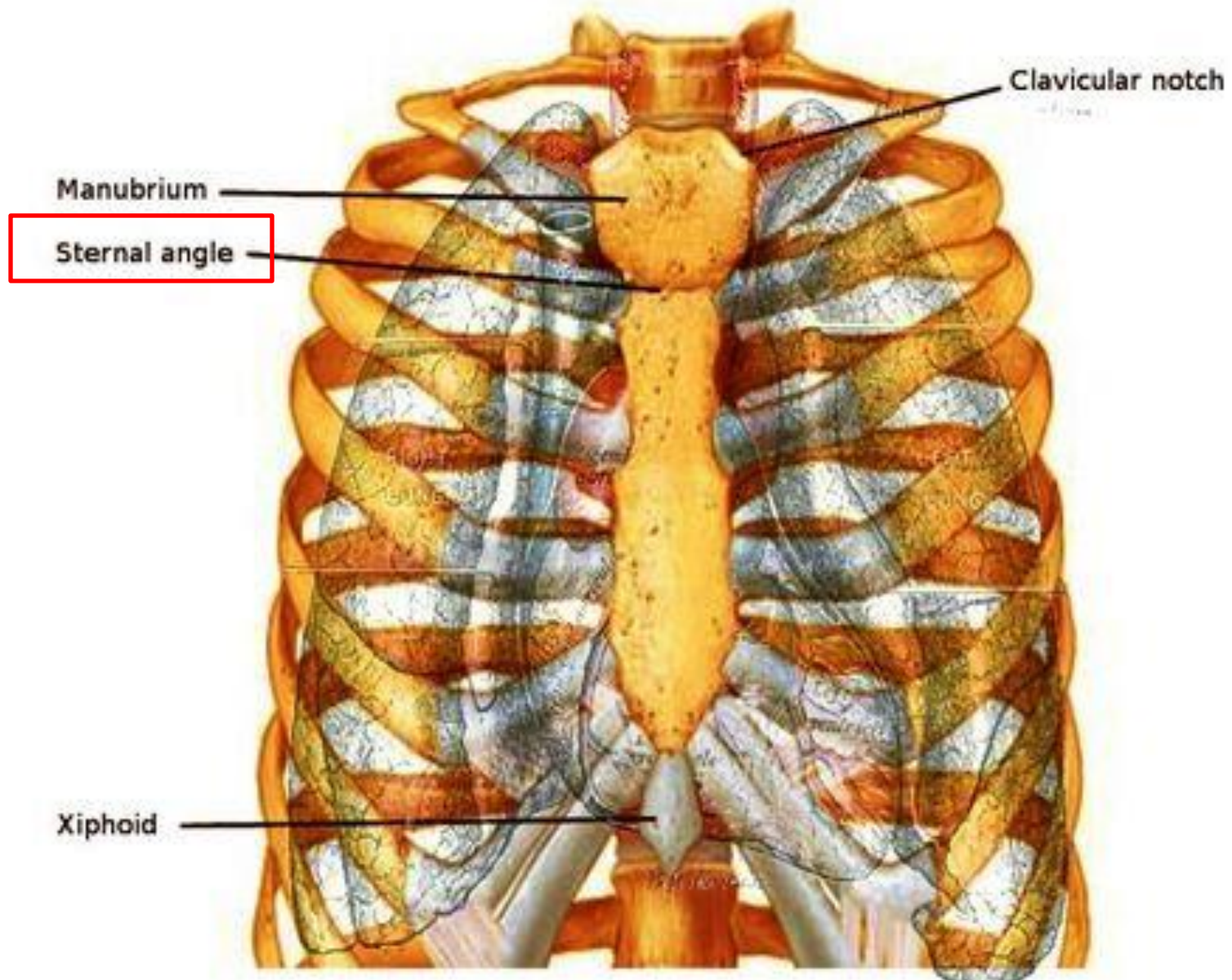
3-Cervical plexus [branches]:

Site: appear at the middle of the posterior border of the sterno-mastoid muscle and **diverge in different directions.**

Branches:

- The lesser occipital nerve (C2): see scalp
- The great auricular nerve (C2, 3): see scalp & face
- The transverse cervical nerve (C2, 3): Divides into **ascending** and **descending** branches TO Supplies the skin of the front of the neck.
- The supraclavicular nerves (C3, 4): Divides into **medial, intermediate & lateral supraclavicular nerves** to Supply the skin of the front of the thorax down to the sternal angle.





4-Muscle :- In the content

inferior belly of omohyoid.

5-Lymph nodes:

1 occipital L.N.
at the apex:
2 supra-clavicular
L.N at the base:

