

Neck muscles

presented by
Wessam Hamed

flh D fi Associate professor ofAnatomy fi Embryology
Facultyof dentistryZarqa university of Jordan
Facultyof medicine Mansoura university Egypt

Sternomastoid muscle

Or Sternocleidomastoid muscle

Origin:

Clavicular head: from medial 1/3 of **clavicle** upper surface

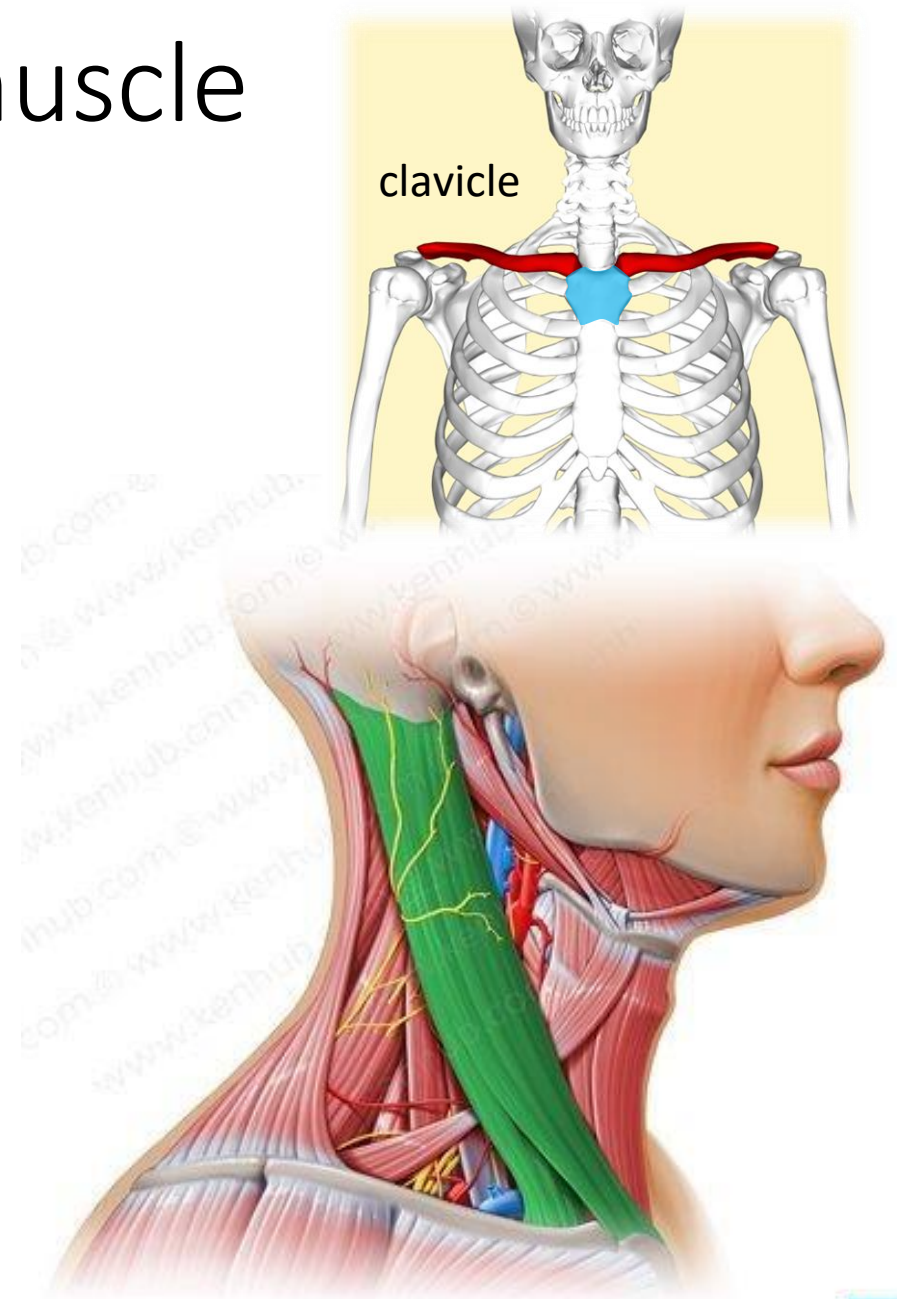
Sternal head: from front of **manubrium** sterni

Insertion:

Mastoid process outer surface

Superior nuchal line lateral ½

Nerve supply: spinal accessory nerve
(11th cranial N)



Action:

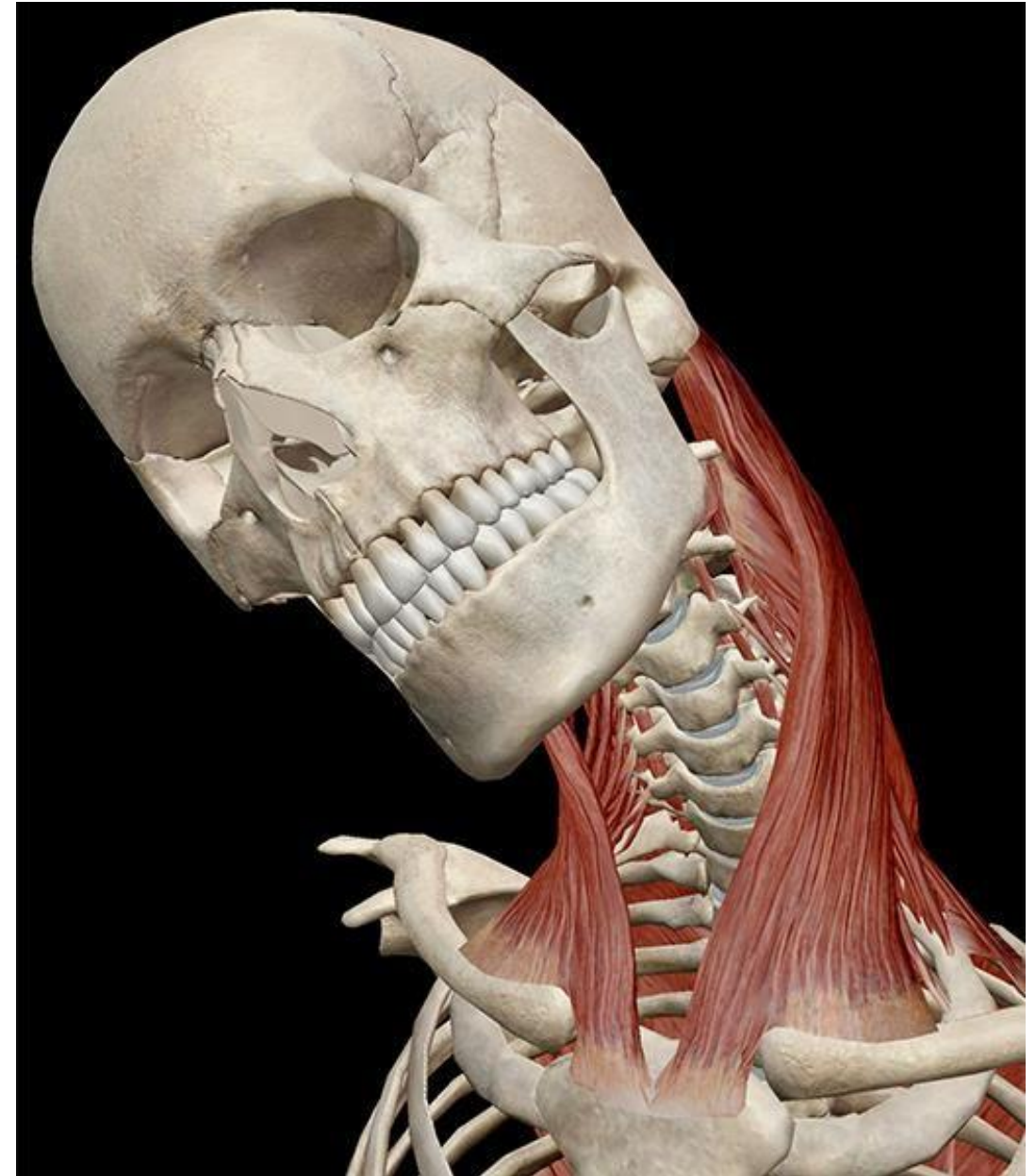
On one side:

- Flex the neck to same side
- Turn the face up to opposite side

On both sides:

Anterior fibers: flex neck

Posterior fibers: extend the neck



Platysma muscle

Site: superficial fascia of the neck

Origin: thoracic fascia up to 2nd rib

Insertion: base of the mandible

Nerve supply: cervical branch of facial nerve

Action:

grimacing = vertical folds of neck

Depress the mandible.



© www.kenthub.com
KEN HUB



Adobe Stock | #219098951

Supra hyoid group of muscles

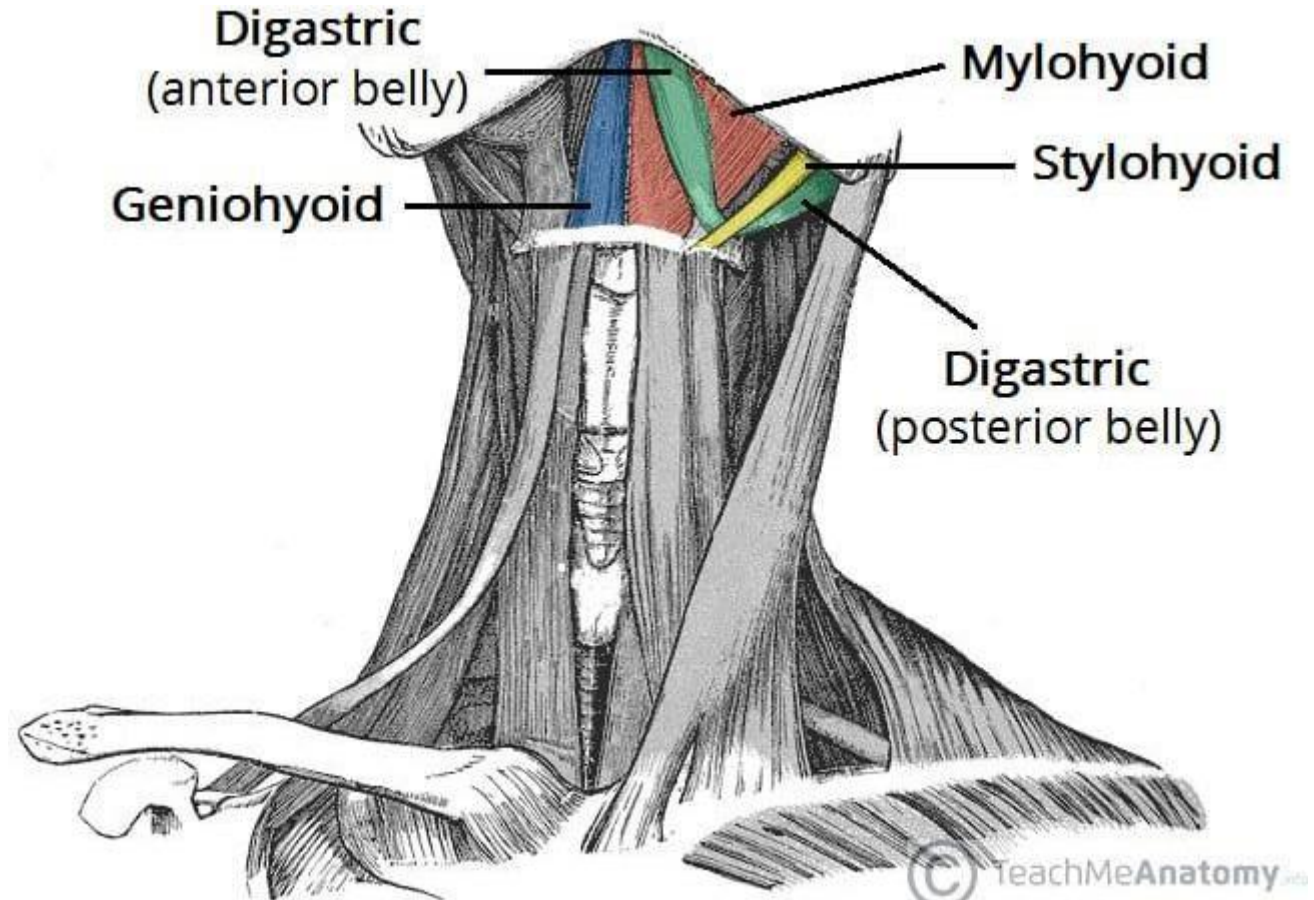
✓ **Digastric muscle**
(Di = 2)

✓ **Mylohyoid muscle**

✓ **Stylohyoid muscle**

✓ **Geniohyoid muscle**

✓ **Hyoglossus muscle**



Digastric muscle

Origin:

Anterior belly: digastric fossa of the mandible

Posterior belly: digastric notch on medial surface of mastoid process

Insertion: intermediate tendon attached to greater horn by fibrous sling

Nerve supply:

Anterior belly: nerve to mylohyoid

Posterior belly: descending motor of facial nerve

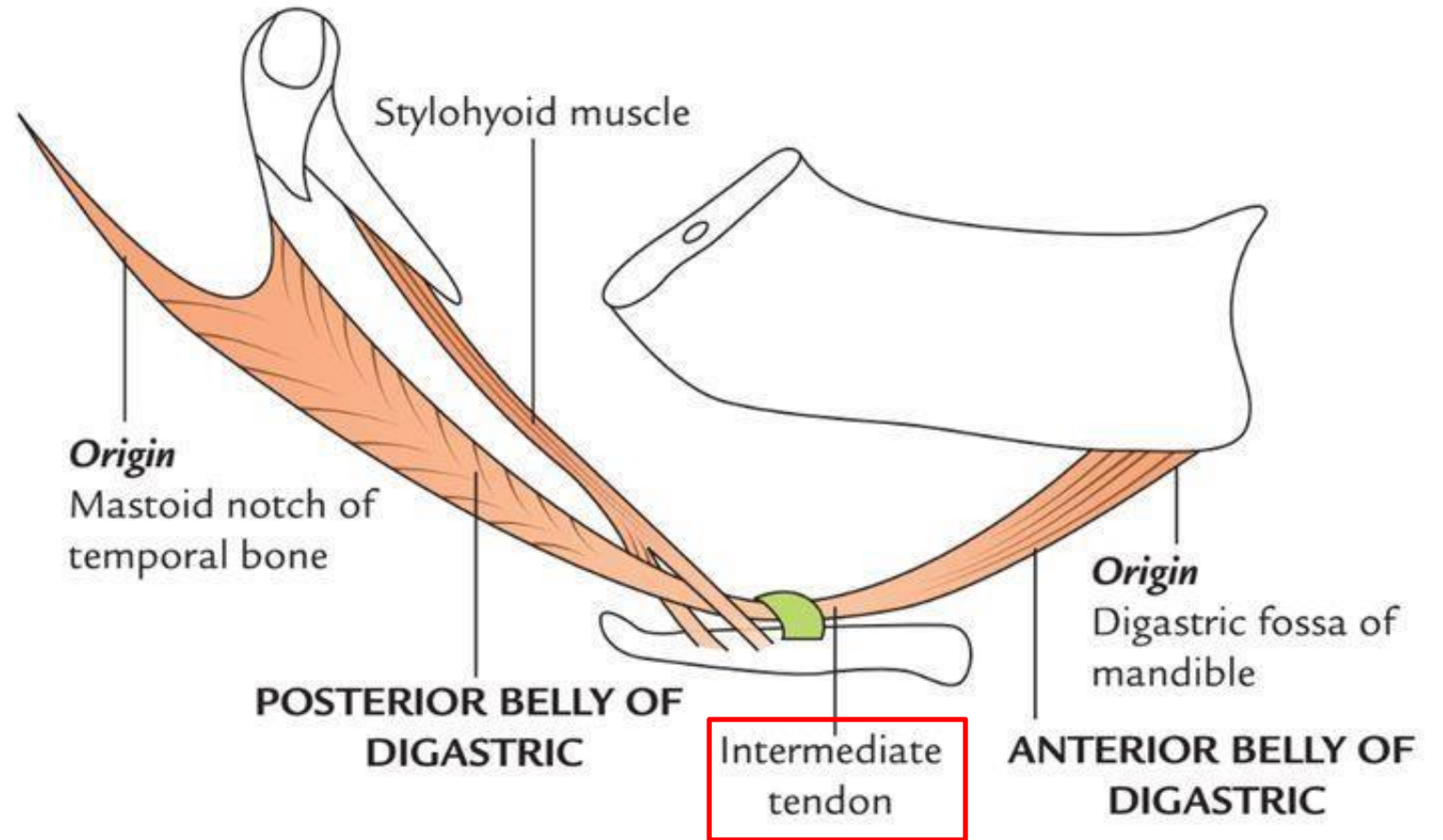
Action:

Anterior belly:

Depress mandible & elevate hyoid up and forward

Posterior belly:

elevate hyoid up and back



Stylohyoid muscle

Origin:

Styloid process base posteriorly

Insertion:

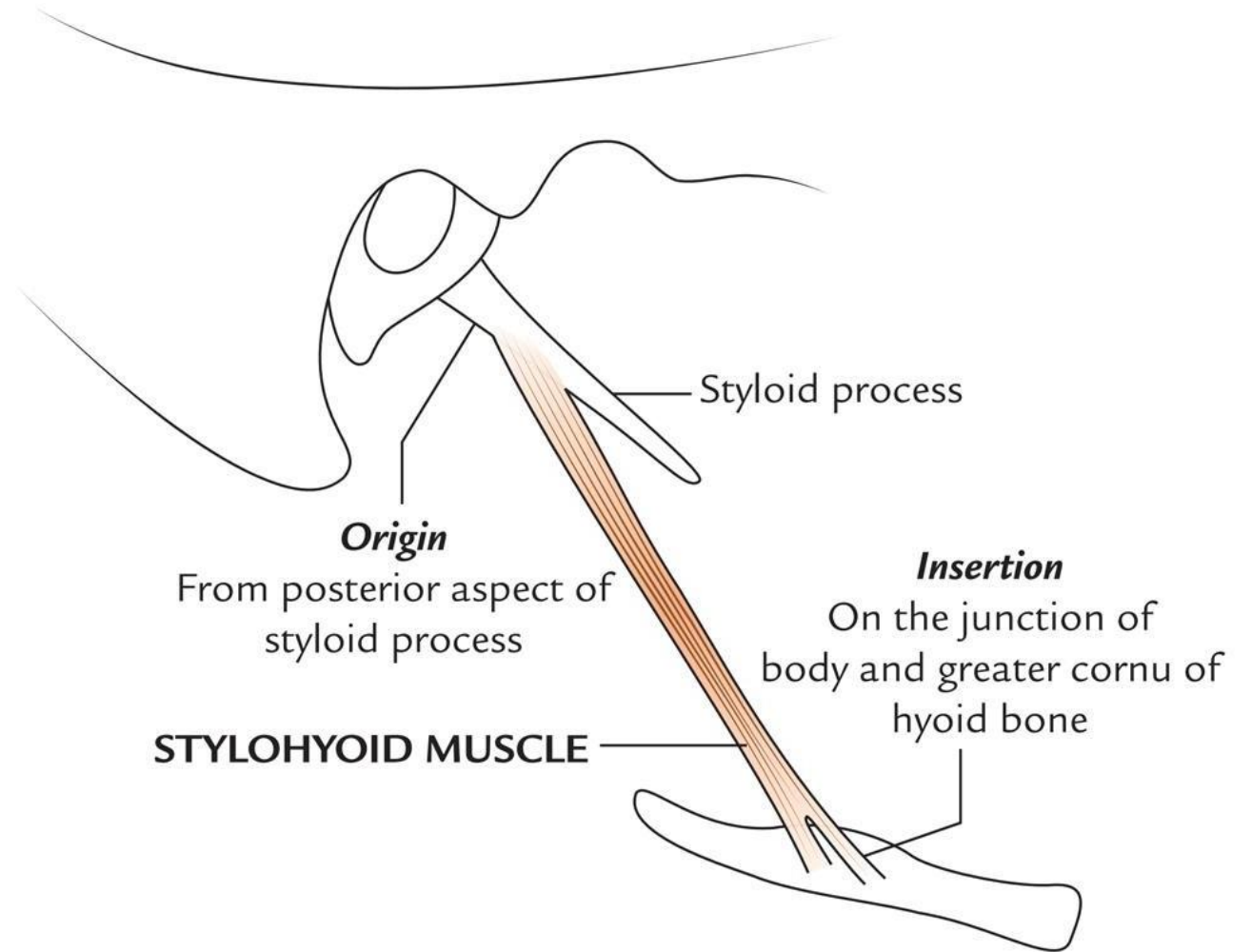
Splitted tendon surround posterior belly of digastric & attached to greater horn of hyoid bone at its junction with body.

Nerve supply:

descending motor of facial nerve

Action:

Pull hyoid bone up & back



Geniohyoid muscle

Origin:

Inferior genial tubercles

Insertion:

Front of the body of hyoid bone

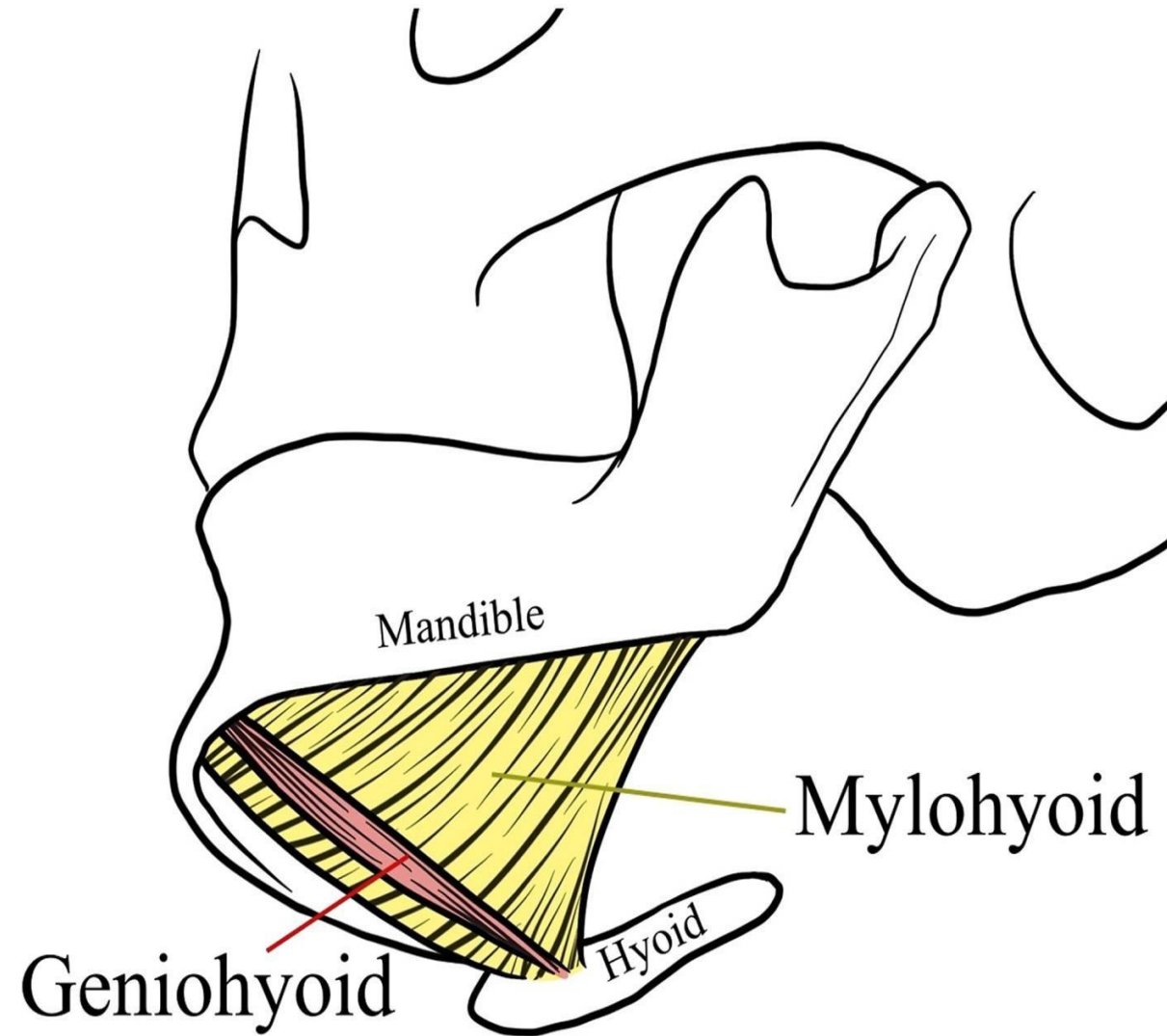
Nerve supply:

C1 via hypoglossal nerve (12th cranial N)

Action:

Pull hyoid bone up & forward

Depress the mandible



Mylohyoid muscle (oral diaphragm)

Origin:

Mylohyoid line of mandible

Insertion:

Median raphe of neck

Upper border of body of hyoid

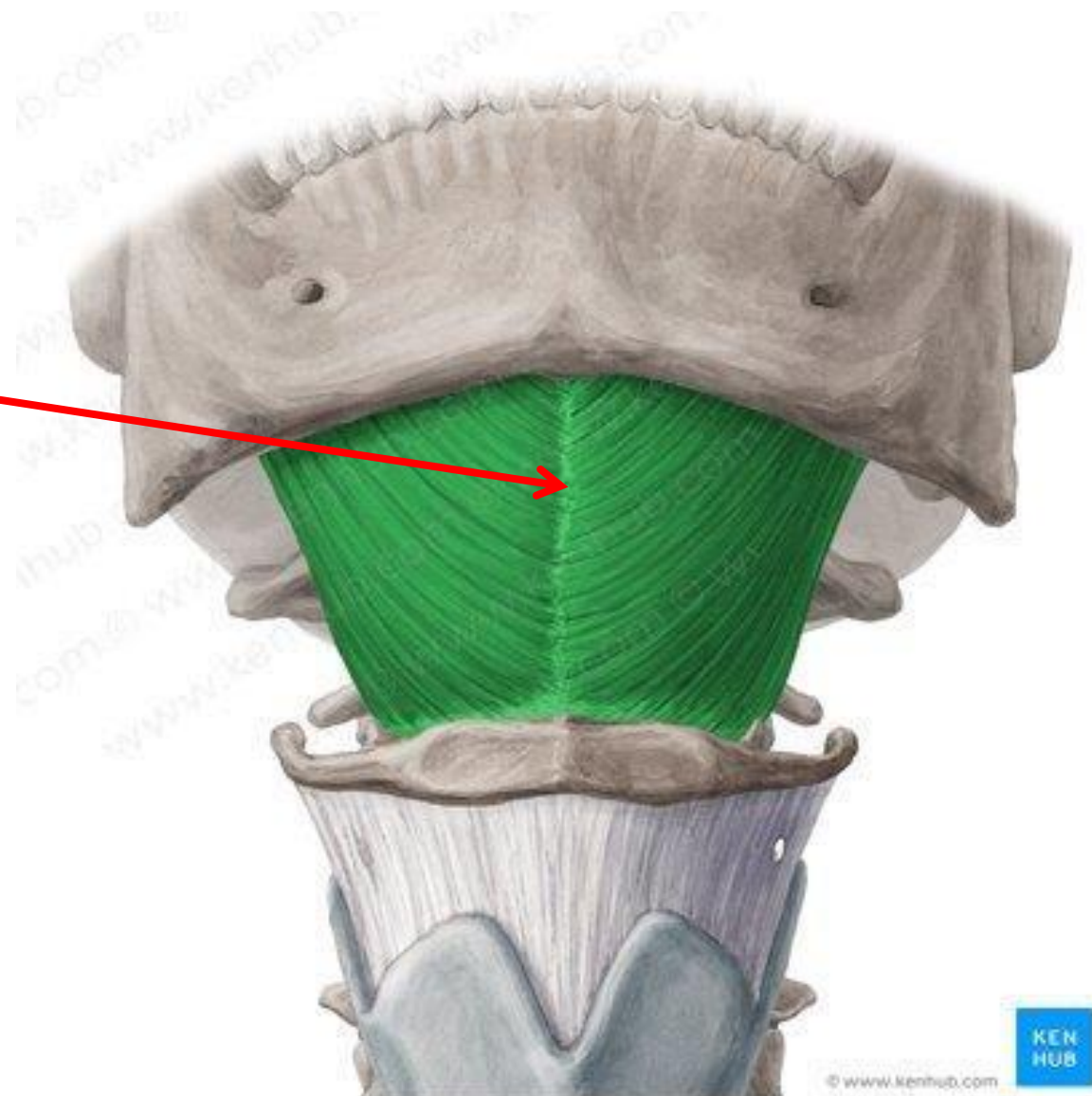
Nerve supply:

Nerve to mylohyoid muscle

Action:

Pull hyoid bone up

Depress the mandible



hyoglossus muscle

Origin:

All length of Greater horn of hyoid

Insertion:

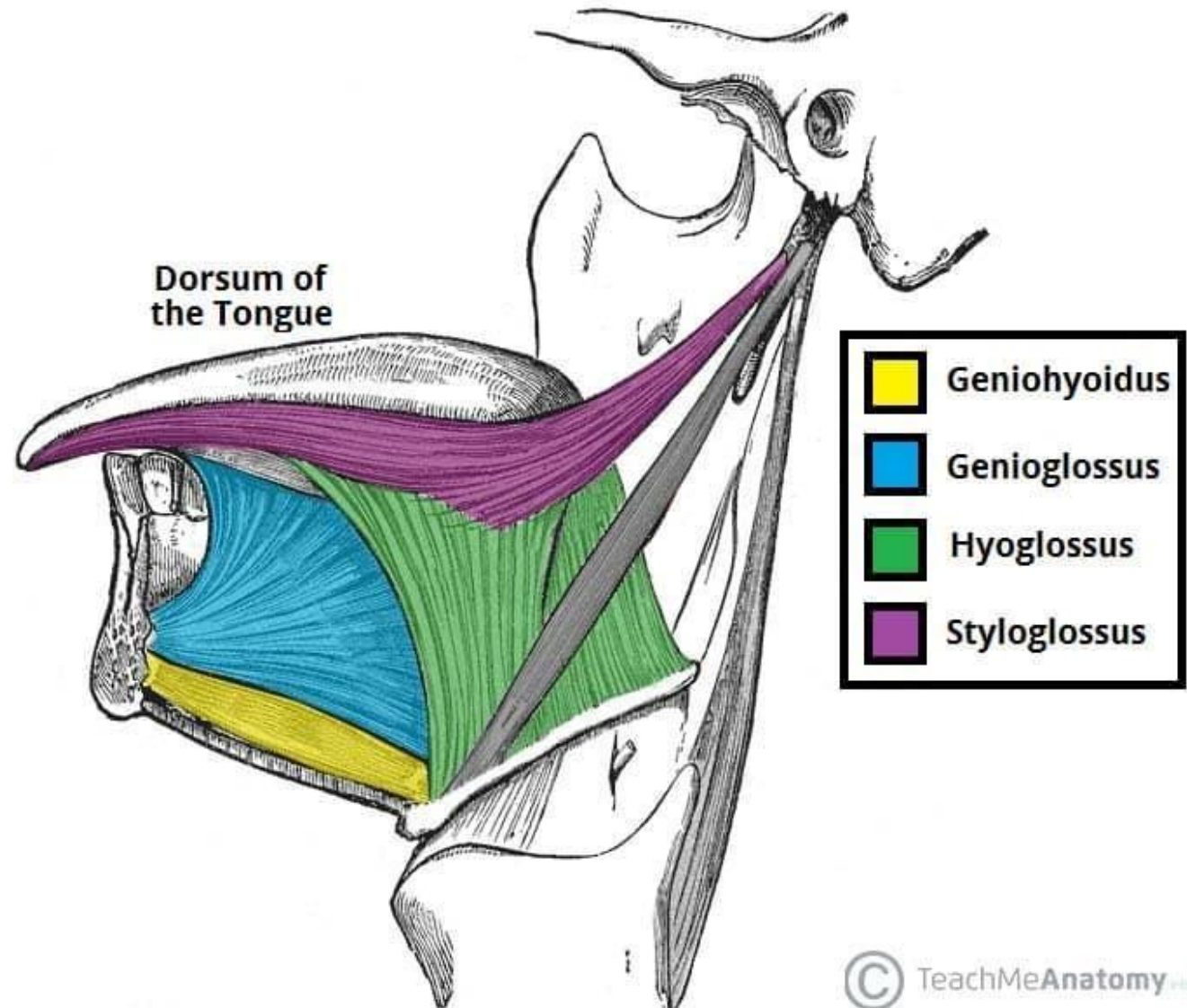
Posterior ½ of side of the tongue

Nerve supply:

Hypoglossal nerve

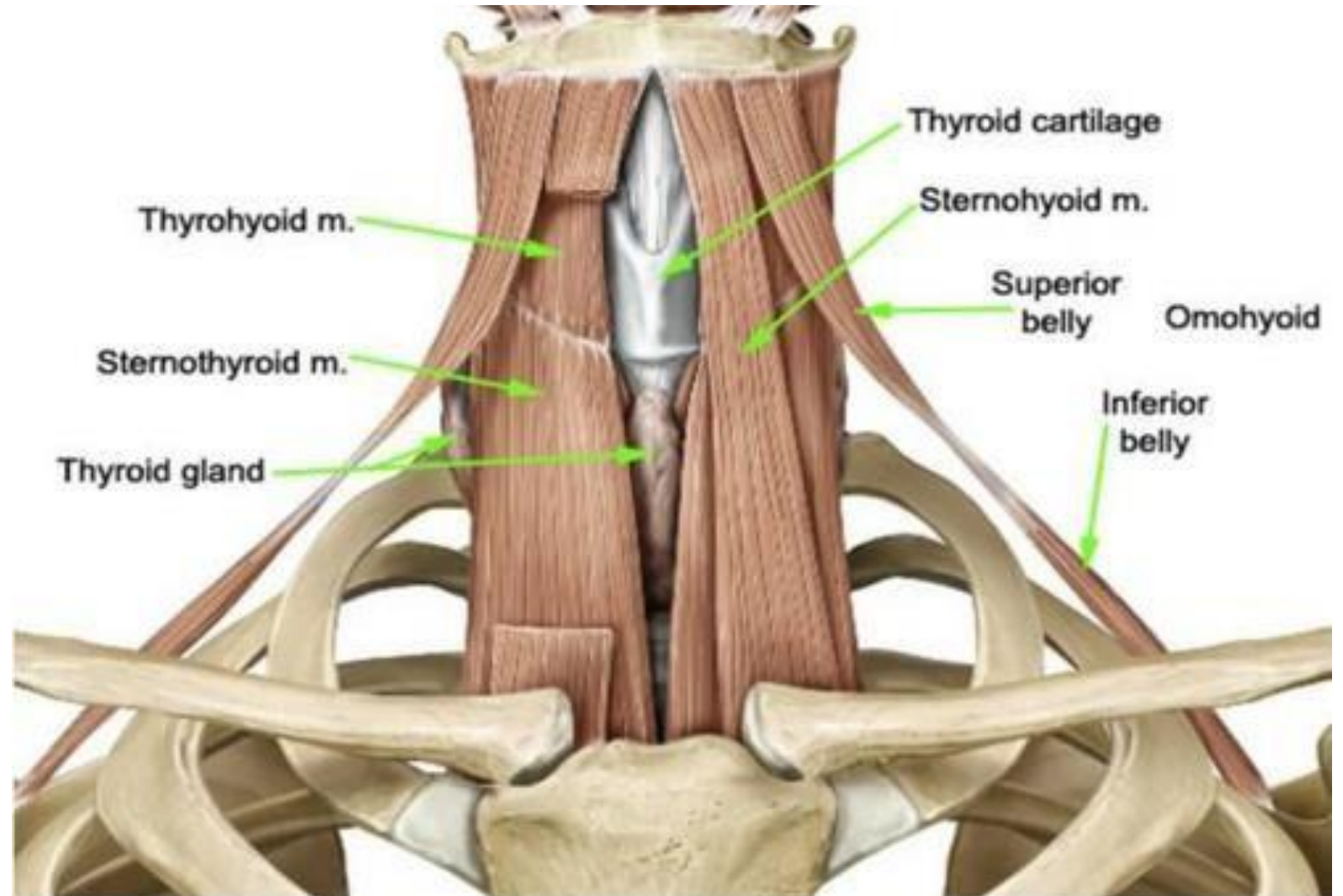
Action:

- Depress posterior part of tongue
- As in suckling
- Elevate hyoid bone



infra hyoid group of muscles

- ✓ **Sternohyoid muscle**
- ✓ **sternothyroid muscle**
- ✓ **Thyrohyoid muscle**
- ✓ **Omohyoid muscle**



sternohyoid muscle

Origin:

Back of manubrium sterni
Back of medial end clavicle
Back of sternoclavicular joint

Insertion:

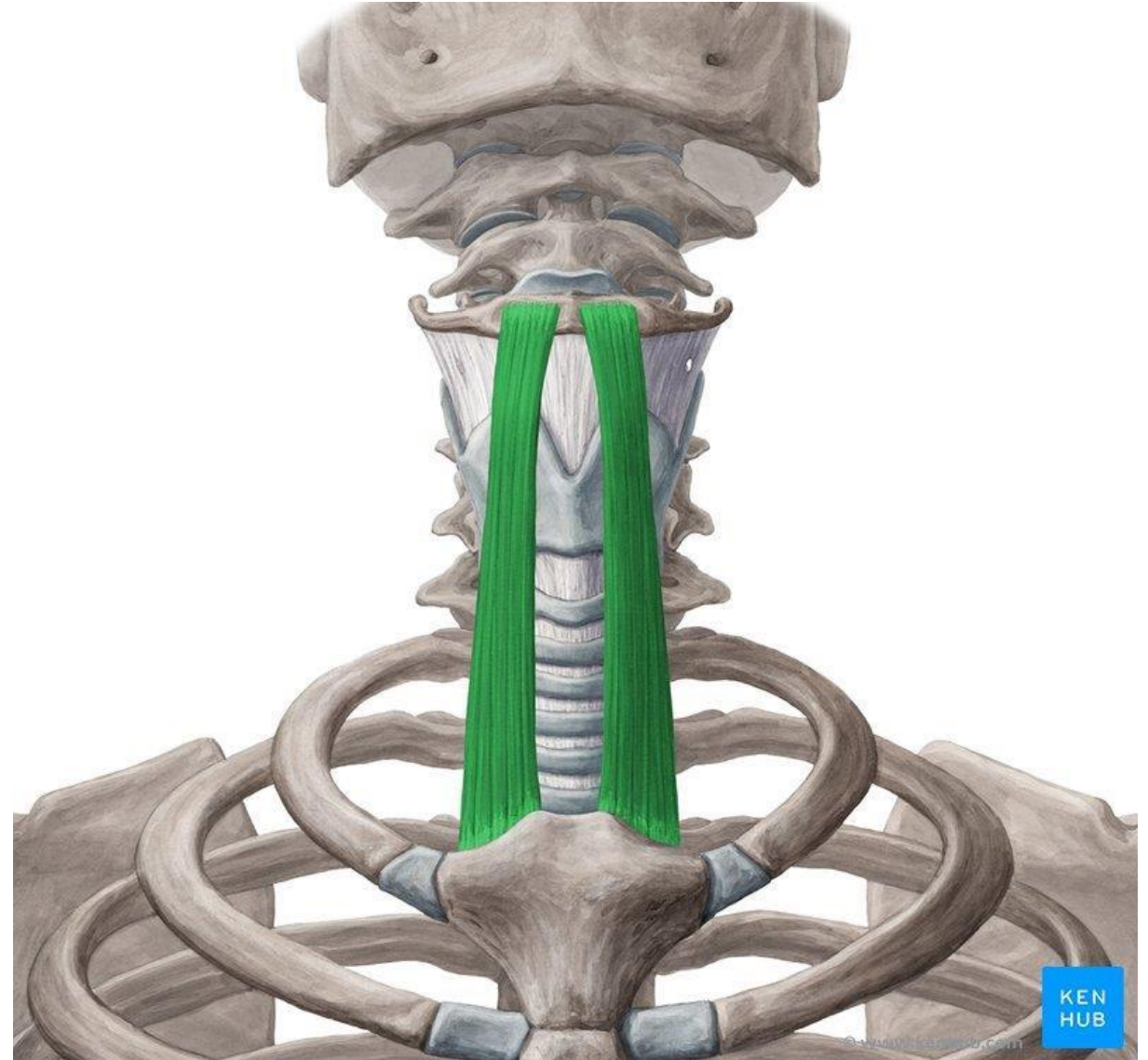
Lower border of body of hyoid bone

Action:

- Depress hyoid bone
- During deglutition عملية البلع

➤ N supply

✓ Ansa cervicalis



sternothyroid muscle

Origin:

Back of manubrium sterni

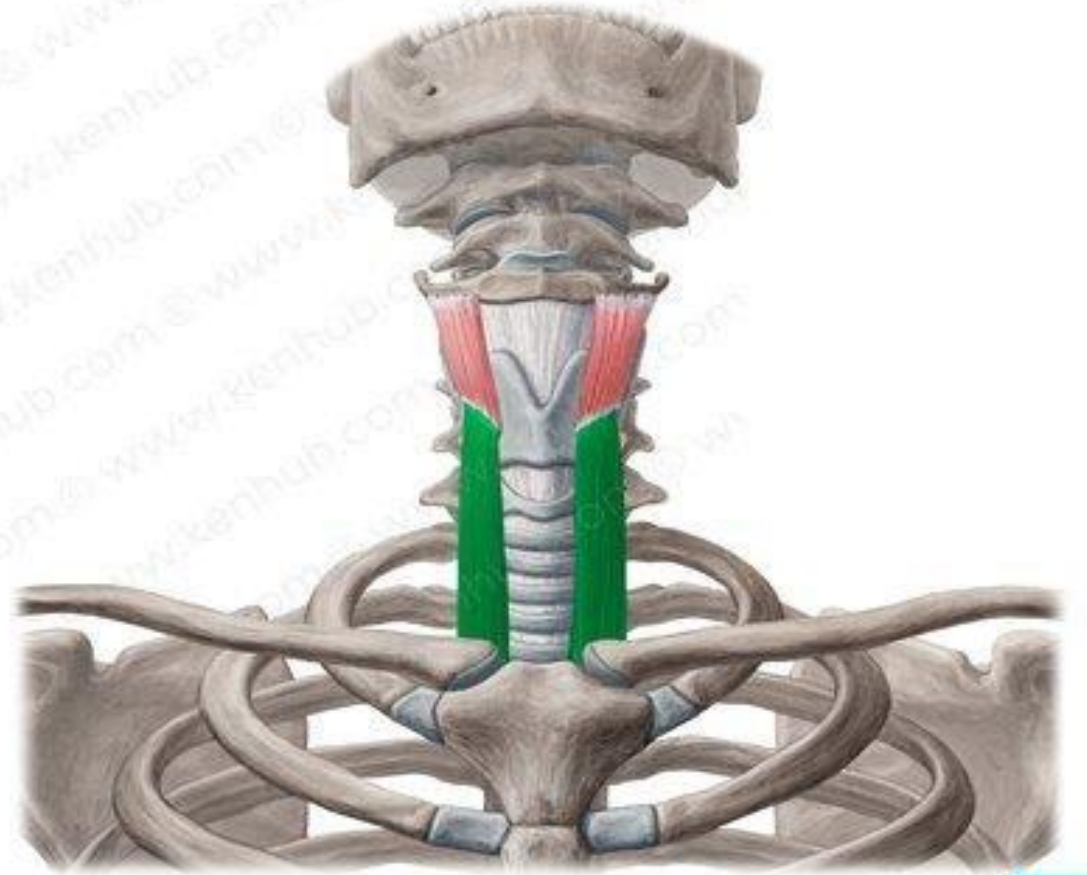
Lower than sternohyoid origin

Insertion:

Oblique line of thyroid cartilage

Action:

- Depress larynx ? Because thyroid cartilage is part of the larynx.



Thyrohyoid muscle

Origin:

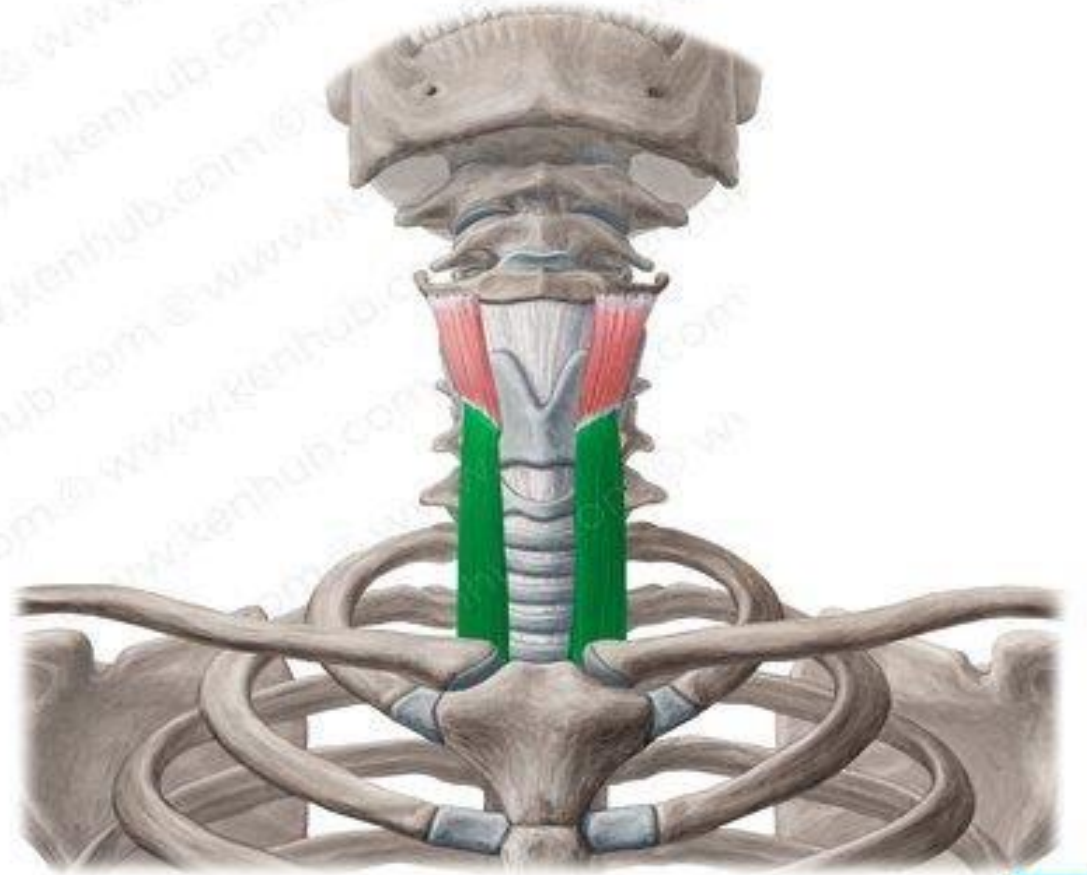
Oblique line of thyroid cartilage

Insertion:

Lower border of greater horn of hyoid bone

Action:

- Depress hyoid bone
- Elevate larynx



Omohyoid muscle

Origin:

Anterior (superior) belly:

lower border of body of hyoid bone

Posterior (inferior) belly:

supra scapular notch of the scapula

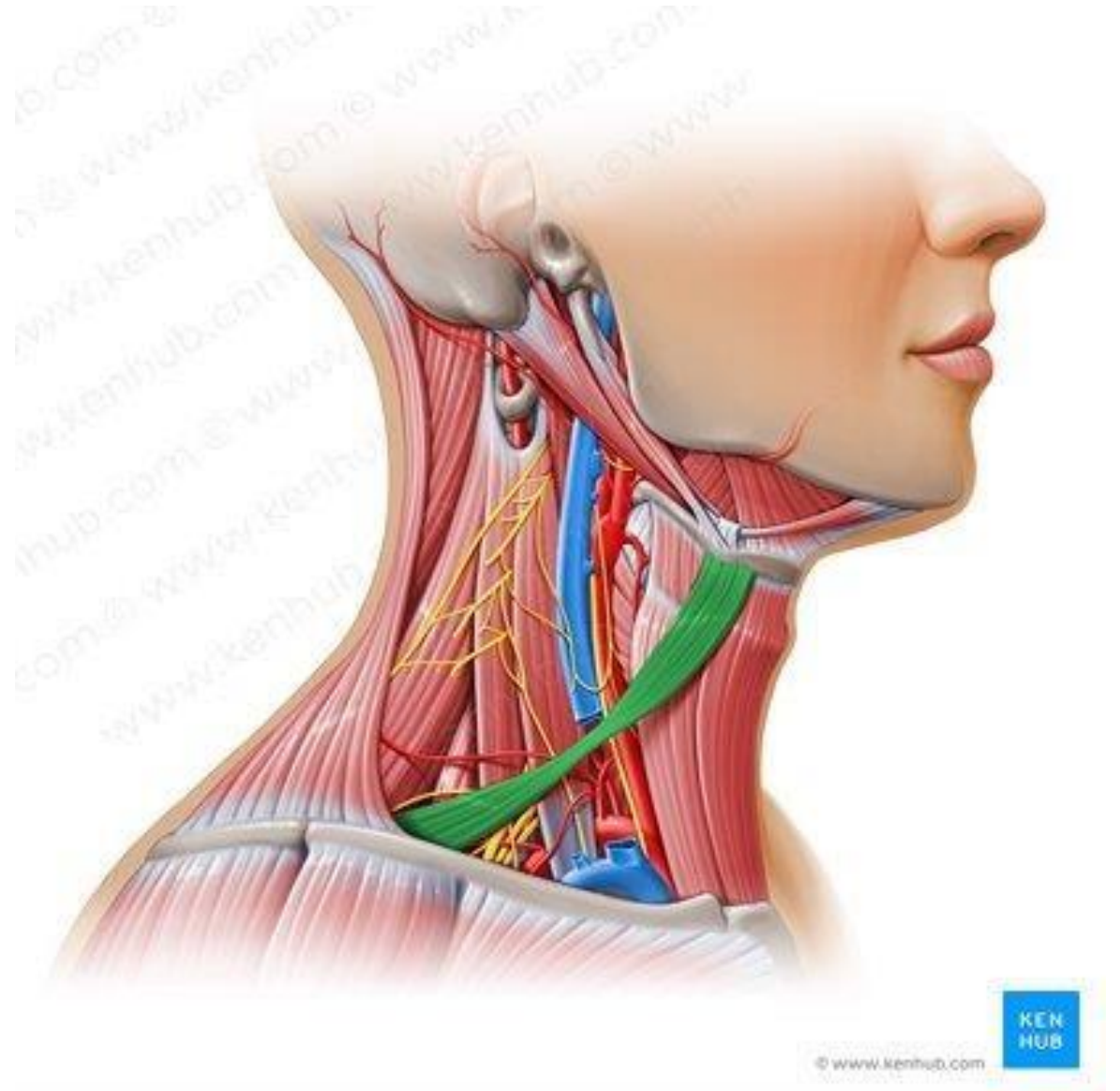
Insertion: intermediate tendon

(deep to sternomastoid)

attached to clavicle by fibrous sling.

Action:

- Depress hyoid bone



Ansa cervicalis

Nerve loop formed by 2 rami:

Descends hypoglossi (superior):

12 cr. Nerve & C1

Descends cervicalis (inferior): C2 & C3

Supply: all infrahyoid muscles except **thyrohyoid** supplied by **C1 via hypoglossal nerve.**

Site: on anterior wall of carotid sheath.

